

34th Annual Angus Bull Sale

**MONDAY,
MARCH 11, 2024**

1:00 p.m. MT

Faith (SD) Livestock Auction

DVAuction
Broadcasting Real-Time Auctions



WWW.SCHAUERANGUS.COM

Cattle Producers,

Welcome and thank you for your interest in our program. I believe this is our most uniform, most docile, and most powerful set of bulls I have raised to date.

This year the bulls were 50k tested for parentage and all genetic defects. I was pleased with how the numbers came back with many of them ranking in the upper tier of the breed. My goal is to produce functional, easy to handle cattle that will perform in the harshest conditions.

The bulls are covered with a first breeding guarantee for fertility and injury. If a bull is out of commission or sidelined for whatever reason, please let me know and a replacement bull will be supplied. I feel I stand behind the bulls as well as anyone in the business, and I want your experience of owning a Schauer bull to be a positive one.

Sincerely, Bryant Schauer
(605) 490-9528 – cell

34th ANNUAL PRODUCTION SALE Monday, March 11, 2024

1:00 p.m. (MT)

Faith (SD) Livestock Commission
Sale Day Phone: (605) 967-2200

SELLING:

50 Yearling Bulls
10 Two-Year-Old Angus Bulls

AUCTIONEER: Seth Weishaar (605) 210-1124

SALE REPRESENTATIVES:

Beau Ravellette, RPI Promotions-Invite605-685-8155
Donnie Leddy, Cattle Business Weekly605-695-0113
Dan Piroutek, Tri-State Livestock News605-544-3316

Our sale will be on
DVAuction
Broadcasting Real-Time Auctions

TRUCKING: Free trucking up to 250 miles.

Deduct \$100 if you take home sale day. Bulls kept free until April 15th.

HEALTH: All bulls will be accompanied by proper health certificates for immediate shipping.

Birth: Alpha CD, CattlActive

Branding: Vista Once, Vision 7 20/20

Pre Weaning: Vision 7 Somnus, Vista Once

Weaning: Poured with Ivermax

February: Poured with Clean-up

• Bulls will be semen tested and ultrasounded by sale day.

LUNCH: Free lunch will be served prior to the sale.

FIRST BREEDING SEASON GUARANTEE

All bulls will be covered 50% by Schauer Angus Ranch if they are injured during their first breeding season. Breeding season is defined as the 60-day period following the first turnout of the bulls.

50% of the purchase price, minus half the salvage value, will be given as credit towards a replacement bull, if we have one available, or as credit at next year's sale.

1. All injured bulls must be diagnosed by a licensed veterinarian.

2. We must be notified should injury occur and before bull is sold for salvage. A copy of the salvage receipt must be sent to us.

3. All claims must be made by September 1, 2024.

Bryant Schauer

Home: (605) 739-5621

Cell: (605) 490-9528

P.O. Box 425 • Faith, SD 57626

Doug & Amie Schauer

(605) 967-2611

RAV
RAY PRINTING & DESIGN

Catalog produced by Rav Printing & Design
Beau & Mary Ravellette • (605) 685-8155
Philip, South Dakota

ANGUS TOUR PICTURES COURTESY OF WILL BOLLUM PHOTOGRAPHY

S Architect 9501

Reg: *19437622 • Birth Date: 02/02/2019

{KM BROKEN BOW 002
SYDGEN BLUEPRINT **AAA *18780636**
 Sire {SITZ FLORABELLE FANNY 4735
 {S WHITLOCK 179
S BLOSSOM 7514 **AAA 18770004**
 Dam {S BLOSSOM 5525

SUMMITCREST COMPLETE 1P55
 SUMMITCREST PRINCESS 0P12
 SITZ INVESTMENT 660Z
 SITZ FLORABELLE FANNY 2683
 S CHISUM 6175
 S PRIDE ANNA 709
 CONNEALY COURAGE 25L
 S BLOSSOM 374



CED	BW	WW	YW	SC	Milk	Doc	CW	Marb	RE	\$W	\$F	\$G	\$B
+8	+0.3	+92	+152	+1.63	+21	+27	+74	+0.51	+0.74	+84	+110	+46	+156

I chose to use Architect because of his fresh, outcross pedigree in our herd. His offspring display excellent depth and rib shape. It has been said that his daughters may very well be his greatest asset



SCHAUER ARCHITECT 368

Born: 2/20/23 • Reg: 20872733

ANGUS

SIRE: **S ARCHITECT 9501**

{SCHAUER CHARLO 783
SCHAUER CHARLO 068
 Dam {SCHAUER LND 528

COLEMAN CHARLO 0256
 SCHAUER FRONTMAN 268
 SCHAUER LND 246
 SCHAUER FINAL ANSWER 248

SCHOOL FARM FLOWER 210				
BW: 87	Act. WW: 860		Adj. 205: 810	WW Ratio: 115
CED	BW	WW	YW	MILK
+4	+2.5	+87	+149	+25

A long-bodied, stout and stylish son of Architect. Dam posts a WW ratio of 2 @ 113. Loaded with performance and ranking in the top 5% in both WW and YW EPD.



2

SCHAUER ARCHITECT 343

Born: 2/26/23 • Reg: 20881113

ANGUS

SIRE: **S ARCHITECT 9501**

{SCHAUER GREAT DIVIDE 243

SCHAUER GREAT DIVIDE 943

Dam

{SCHAUER ACTIVE DUTY 480

LIMESTONE GREAT DIVIDE U254

SCHAUER GRID TOPPER 7435

R B ACTIVE DUTY 010

SCHAUER FOREVER LADY 803

BW: 89	Act. WW: 865	Adj. 205: 804	WW Ratio: 114	
CED	BW	WW	YW	MILK
+9	+0.5	+80	+140	+35

A deep ribbed son of Architect with added frame and power. Check out the birth to weaning EPD spread.



SD ANGUS TOUR

3

SCHAUER ARCHITECT 350

Born: 2/23/23 • Reg: 20881145

ANGUS

SIRE: **S ARCHITECT 9501**

{BALDRIDGE BRONC

SCHAUER BRONC 840

Dam

{SCHAUER SURE SHOT 450

EF COMMANDO 1366

BALDRIDGE ISABEL Y69

MOGCK SURE SHOT

SCHAUER FOREVER LADY RT 806

BW: 86	Act. WW: 820	Adj. 205: 743	WW Ratio: 106	
CED	BW	WW	YW	MILK
+7	+0.4	+79	+127	+25

A more moderate, big-hipped son of Architect with an outcross pedigree. His dam is a smaller framed Bronc daughter backed by the Forever Lady cow family. She has produced 3 calves with a WW ratio of 108.



4

SCHAUER ARCHITECT 371

Born: 2/18/23 • Reg: 20872750

SIRE: **S ARCHITECT 9501**

{SCHAUER GREAT DIVIDE 574

SCHAUER GREAT DIVIDE 742

Dam

{SCHAUER IN FOCUS 19642

SCHAUER GREAT DIVIDE 243

SCHAUER LND 878-15074

MYTTY IN FOCUS

SCHAUER RIGHT ANSWER 9642

BW: 71	Act. WW: 800	Adj. 205: 715	WW Ratio: 102	
CED	BW	WW	YW	MILK
+13	-0.5	+72	+124	+32

A double digit calving ease bull with plenty of gas. His dam is super deep, easy fleshing with a perfect udder. She posts an impressive WW ratio of 107 on 5.



4

5

SCHAUER ARCHITECT 339

Born: 2/17/23 • Reg: 20872741

SIRE: **S ARCHITECT 9501**

{S A V BRAND NAME 9115

SCHAUER BRAND NAME 39728

Dam

{SCHAUER DUKE 9728

S A V BISMARK 5682

S A V BLACKCAP MAY 5530

SCHAUER DUKE 616

SCHAUER 004 7238

BW: 65	Act. WW: 825	Adj. 205: 757	WW Ratio: 108	
CED	BW	WW	YW	MILK
+12	-1.0	+66	+112	+35

A double digit calving ease specialist. His dam has produced 7 calves with a BW ratio of 97 and a WW ratio of 105.

6

SCHAUER ARCHITECT 328

Born: 2/18/23 • Reg: 20872731

SIRE: **S ARCHITECT 9501**

{CLASSIC COWBOY UP 726

SCHAUER COWBOY UP 004

Dam

{SCHAUER BRAND NAME 39728

HA COWBOY UP 5405

CARLSON HEATHER BLOOM 202

S A V BRAND NAME 9115

SCHAUER DUKE 9728

BW: 63	Act. WW: 705	Adj. 205: 667	WW Ratio: 95	
CED	BW	WW	YW	MILK
+10	-1.2	+65	+107	+29

Another calving ease son of Architect whose dam is a maternal sister to lot 5. His dam has amazed me with her actual birth to weaning spread on her first 2 calves. She posts a BW ratio of 76 and a WW ratio of 100.

7

SCHAUER ARCHITECT 385

Born: 2/23/23 • Reg: 20872767

SIRE: **S ARCHITECT 9501**

{MUSGRAVE AVIATOR

SCHAUER AVIATOR 855

Dam

{SCHAUER REALLY WINDY 39755

KROUPALS B&B IDENTITY

MCATL FOREVER LADY 1429-138

V D A R REALLY WINDY 4097

SCHAUER NEW DESIGN 9755

BW: 89	Act. WW: 805	Adj. 205: 730	WW Ratio: 104	
CED	BW	WW	YW	MILK
+6	+1.3	+88	+141	+24

A long bodied Architect stacking maternal sires Aviator, Really Windy, and New Design 878.



SD ANGUS TOUR

8

SCHAUER ARCHITECT 370

Born: 2/27/23 • Reg: 20872760

SIRE: **S ARCHITECT 9501**

{SCHAUER LND 246

SCHAUER LND 797

Dam

{SCHAUER DUKE 9710

LEACHMAN NEW DESIGN 878-4570

SCHAUER RIGHT TIME 1147-509

SCHAUER DUKE 616

SCHAUER PREMIUM BEEF 7619

BW: 82	Act. WW: 750	Adj. 205: 687	WW Ratio: 98	
CED	BW	WW	YW	MILK
+9	-0.8	+79	+123	+35

A moderate framed, wide based bull from a perfect uddered LND daughter. I believe his daughters will be some of the best.



SD ANGUS TOUR

RL Justice

Reg: *19836564 • Birth Date: 02/18/2020

{ CONNEALY JUDGMENT
KG JUSTIFIED 3023 **AAA #*17707279**
 Sire { KG MISS MAGIC 1443
 { BARSTOW CASH
RL CASH LADY 8988 **AAA #*19239531**
 Dam { RL MANDATE LADY 2981

CONNEALY CONSENSUS 7229
 ENTRINE OF CONANGA 9876
 SITZ WISDOM 481T
 KG MISS MAGIC 3528
 SITZ DASH 10277
 BARSTOW QUEEN W16
 SYDGEN MANDATE 6079
 7 Z LADY DELUXE 981



CED	BW	WW	YW	SC	Milk	Doc	CW	Marb	RE	\$W	\$F	\$G	\$B
+12	-2.0	+69	+130	+1.82	+33	+27	+55	+0.69	+0.69	+76	+96	+50	+146

Justice was added to our battery because of his calving ease, added scrotal, docility, depth of rib, big hip, and moderate frame. Expect the daughters to be some of the best.



9

SCHAUER JUSTICE 362

Born: 2/23/23 • Reg: 20873633

ANGUS

SIRE: **RL JUSTICE**

{ TEX PLAYBOOK 5437

SCHAUER QUEEN MOTHER 18162

Dam

{ SCHAUER CHARLO 812

BASIN PAYWEIGHT 1682

RITA 1C43 OF 9M26 COMPLETE

COLEMAN CHARLO 3212

SCHAUER IN FOCUS 19642

BW: 75	Act. WW: 790	Adj. 205: 783	WW Ratio: 111	
CED	BW	WW	YW	MILK
+8	-0.3	+72	+131	+30

A powerful, deep ribbed, calving ease son of Justice. His first calf Playbook dam posted an individual WW ratio of 106.

DVAuction
 Broadcasting Real-Time Auctions

Never Miss An Auction Again!
 Watch & Bid online for FREE!

Visit **www.DVAuction.com**
 and Register Today!

For General Questions Please Contact Our Office:
 (402) 316-5460 or support@dvauction.com

10

SCHAUER JUSTICE 321

Born: 2/19/23 • Reg: 20873644

SIRE: **RL JUSTICE**

{KESSLERS COMMODORE 6516

SCHAUER LADY KELTON 153721

Dam

{SCHAUER REALLY WINDY 521

CONNEALY COMRADE 1385

KESSLERS RAINBOW 0595

V D A R REALLY WINDY 4097

SCHAUER CONSENSUS 317521

BW: 73	Act. WW: 840	Adj. 205: 820	WW Ratio: 117	
CED	BW	WW	YW	MILK
+14	-1.7	+68	+121	+30

A smooth made, long bodied, calving ease son of Justice from a very attractive Commodore first calf heifer who posted a WW ratio of 104.



11

SCHAUER JUSTICE 372

Born: 2/23/23 • Reg: 20873656

SIRE: **RL JUSTICE**

{R B ACTIVE DUTY 010

SCHAUER ACTIVE DUTY 542

Dam

{SCHAUER DAIGGER 4272

LCC NEW STANDARD

B A LADY 6807 305

J D DAIGGER 901

SCHAUER CINCHA 272

BW: 80	Act. WW: 745	Adj. 205: 675	WW Ratio: 96	
CED	BW	WW	YW	MILK
+10	-0.4	+63	+114	+30

A deep ribbed, big hiped, calving ease son of Justice. His dam has an impressive WW ratio of 109 on 7. His G.dam had 11 calves with an average WW ratio of 100.



12

SCHAUER JUSTICE 324

Born: 2/17/23 • Reg: 20873646

SIRE: **RL JUSTICE**

{SCHAUER CHARLO 783

SCHAUER QUEEN MOTHER 184781

Dam

{SCHAUER CHARLO 878

COLEMAN CHARLO 0256

SCHAUER FRONTMAN 268

COLEMAN CHARLO 3212

SCHAUER SURE SHOT 458

BW: 75	Act. WW: 715	Adj. 205: 707	WW Ratio: 101	
CED	BW	WW	YW	MILK
+10	-1.8	+59	+110	+27

Sure shot calving ease bull from a double bred Charlo first calf heifer. G. dam has produced 4 calves with a BW ratio of 99 and WW ratio of 104.



E&B Rival 175

Reg: *20128929 • Birth Date: 01/28/2021

{BASIN PAYWEIGHT 1682
DEER VALLEY GROWTH FUND AAA +*18827828
Sire {DEER VALLEY RITA 36113
{CONNEALY CONFIDENCE PLUS

E&B LADY PLUS 8180 AAA #*19205732
Dam {E&B LADY PRIMESTAR 086

BASIN PAYWEIGHT 006S
21AR O LASS 7017
PLATTEMERE WEIGH UP K360
DEER VALLEY RITA 9457
CONNEALY CONFIDENCE 0100
ELBANNA OF CONANGA 1209
GARDENS PRIME STAR
E&B LADY POWER ALLIANCE 339



CED	BW	WW	YW	SC	Milk	Doc	CW	Marb	RE	\$W	\$F	\$G	\$B
+10	-0.6	+87	+151	+0.51	+34	+19	+70	+1.01	+1.17	+87	+109	+78	+187

Rival was sampled in our herd because of the success we had with Growth Fund in the past. Rival maintains great growth and phenotype with more carcass merit.

13

SCHAUER RIVAL 304

Born: 2/23/23 • Reg: 20873606

ANGUS

SIRE: E&B RIVAL 175

{DEER VALLEY FOX TROT 5327

SCHAUER CHISUM 094

Dam

{SCHAUER COURAGE 694

SANDPOINT BUTKUS X797

SITZ HENRIETTA PRIDE 643T

CONNEALY COURAGE 25L

SCHAUER GAME DAY 094

BW: 75	Act. WW: 790	Adj. 205: 752	WW Ratio: 107	
CED	BW	WW	YW	MILK
+9	+2.0	+82	+138	+25

A flat topped, deep ribbed son of Rival from one of our most productive cow families. Dam had produced 2 calves with a BW ratio of 94 and a WW ratio of 109. G. dam has produced 6 calves with a BW ratio of 89 and a WW ratio of 104 respectively.

14

SCHAUER RIVAL 311

Born: 3/1/23 • Reg: 20873711

ANGUS

SIRE: E&B RIVAL 175

{BARSTOW BANKROLL B73

SCHAUER BANKROLL 900

Dam

{SCHAUER EAGLE EYE 072

BARSTOW CASH

BARSTOW MISS DIANNA Z25

BC EAGLE EYE 110-7

SCHAUER CLASS ACT 072

BW: 84	Act. WW: 885	Adj. 205: 828	WW Ratio: 118	
CED	BW	WW	YW	MILK
+5	+2.9	+89	+146	+26

An attractive larger framed Rival son with lots of grow power ranking in the top 3% for WW EPD. His dam has recorded 2 calves with a WW ratio of 113 and his G. dam has 8 calves with a WW ratio of 104.

15

SCHAUER RIVAL 341

Born: 2/19/23 • Reg: 20873723

ANGUS

SIRE: E&B RIVAL 175

{SCHAUER IN FOCUS759

SCHAUER IN FOCUS 731

Dam

{SCHAUER CONSENSUS 39241

MYTTY IN FOCUS

SCHAUER BANDO 519

CONNEALY CONSENSUS 7229

RIVER HILLS RUBY W241

BW: 79	Act. WW: 765	Adj. 205: 687	WW Ratio: 98	
CED	BW	WW	YW	MILK
+9	+0.5	+60	+94	+27

More moderate framed, strong topped son of Rival from a capacious In Focus daughter who has produced 5 calves with a WW ratio of 100. G. dam produced 5 calves with a WW ratio of 108.

Classic Growth Fund 2042

Reg: 19810657 • Birth Date: 03/21/2020

{BASIN PAYWEIGHT 1682
DEER VALLEY GROWTH FUND AAA +*18827828

Sire {DEER VALLEY RITA 36113

{S A V RESOURCE 1441

CARLSON GIPSOFOLA 353 AAA 17739573

Dam {CARLSON MISS CONTACT 821

BASIN PAYWEIGHT 006S
21AR O LASS 7017
PLATTEMERE WEIGH UP K360
DEER VALLEY RITA 9457

RITO 707 OF IDEAL 3407 7075
S A V BLACKCAP MAY 4136
SYDGEN CONTACT
CARLSON RELOAD 653

CED	BW	WW	YW	SC	Milk	Doc	CW	Marb	RE	\$W	\$F	\$G	\$B
+9	+0.3	+79	+145	+1.00	+25	+16	+72	+0.12	+0.79	+74	+116	+27	+143

Growth Fund was selected from Classic Angus because of his tremendous birth to weaning spread, his massive hip, and his broody Resource dam with her impressive record.



16 SCHAUER GROWTH FUND 396

Born: 3/20/23 • Reg: 20872777

ANGUS

SIRE: **CLASSIC GROWTH FUND 2042**

{S A V PRESIDENT 6847

SCHAUER PRESIDENT 963

Dam

{SCHAUER ACTIVE DUTY 603

COLEMAN CHARLO 0256

S A V BLACKCAP MAY 4136

SCHAUER ACIVE DUTY 479

SCHAUER PRIORITY 403

BW: 98	Act. WW: 795	Adj. 205: 788	WW Ratio: 112	
CED	BW	WW	YW	MILK
-2	+5.2	+84	+145	+23

A big time growth bull by Growth Fund from a bigger framed President daughter. Pedigree loaded with power.



16

17 SCHAUER GROWTH FUND 383

Born: 3/18/23 • Reg: 20872755

ANGUS

SIRE: **CLASSIC GROWTH FUND 2042**

{BARSTOW BANKROLL B73

SCHAUER BANK ROLL 783

Dam

{SCHAUER CONVERTER 2083

BARSTOW CASH

BARSTOW MISS DIANNA Z25

WILLEKES CONVERTER 4402-9

JVC PRIDE 2P 083

BW: 84	Act. WW: 760	Adj. 205: 734	WW Ratio: 104	
CED	BW	WW	YW	MILK
+6	+1.2	+68	+131	+26

A more moderate framed Growth Fund from a fine-boned, very feminine daughter of Bankroll with a beautiful udder. She has produced 5 calves with a BW ratio of 99 and a WW ratio of 103.



17

18 SCHAUER GROWTH FUND 323

Born: 3/12/23 • Reg: 20872779

ANGUS

SIRE: **CLASSIC GROWTH FUND 2042**

{S A V PRESIDENT 6847

SCHAUER PRESIDENT 953

Dam

{SCHAUER LONG DISTANCE 201

COLEMAN CHARLO 0256

S A V BLACKCAP MAY 4136

MOHNEN LONG DISTANCE 1639

SCHAUER BIG TIME 6053

BW: 96	Act. WW: 760	Adj. 205: 736	WW Ratio: 105	
CED	BW	WW	YW	MILK
-1	+5.1	+82	+149	+29

A good looking, wide topped son of Growth Fund with lots of power. Ranks in the top 10% for WW EPD and the top 5% for YW EPD.

Hoffman Thedford

Reg: +*19820180 • Birth Date: 01/28/2020

{ CONNEALY BLACK GRANITE
BAR R JET BLACK 5063 **AAA #*18389838**
 Sire { BAR R IRIS ANITA 0113

{ KG SOLUTION 0018
HA RITO LADY 3839 **AAA #17651108**
 Dam { HA RITO LADY 0622

CONNEALY CONSENSUS 7229
 EURA ELGA OF CONANGA 9109
 SITZ UPWARD 307R
 BAR R ANITA 7081
 MOGCK SURE SHOT
 KG RITO LADY 8724
 HA PROGRAM 5652
 HA RITO LADY 8395

CED	BW	WW	YW	SC	Milk	Doc	CW	Marb	RE	\$W	\$F	\$G	\$B
+13	+0.8	+71	+140	+1.94	+29	+19	+67	+0.57	+0.97	+65	+132	+55	+187

Thedford was used because of his impressive phenotype, scrotal development, docility, and fresh pedigree.



19

SCHAUER THEDFORD 373

Born: 3/27/23 • Reg: 20879713

ANGUS

SIRE: HOFFMAN THEDFORD

{ ELLINGSON CHAPS 4095
SCHAUER CHAPS 806
 Dam { SCHAUER MOTIVE 263

S A V RESOURCE 1441
 E A BLACKCAP 0360
 SOO LINE MOTIVE 9016
 SCHAUER BIG TIME 6873

BW: 82	Act. WW: 700	Adj. 205: 696	WW Ratio: 99
CED	BW	WW	MILK
+8	+1.2	+71	+27

A smaller framed, big hipped son of Thedford.

20

SCHAUER THEDFORD 381

Born: 4/2/23 • Reg: 20878429

ANGUS

SIRE: HOFFMAN THEDFORD

{ S A V RESOURCE 1441
SCHAUER RESOURCE 890
 Dam { SCHAUER IRON MOUNTAIN 16390

RITO 707 OF IDEAL 3407 7075
 S A V BLACKCAP MAY 4136
 S A V IRON MOUNTAIN 8066
 SCHAUER TOPLINE 6390

BW: 78	Act. WW: 720	Adj. 205: 731	WW Ratio: 104
CED	BW	WW	MILK
+11	+0.5	+79	+19

Wide topped, moderate framed calving ease son of Thedford. His dam is a deep bodied, easy fleshing daughter of Resource.

21

SCHAUER THEDFORD 331

Born: 4/6/23 • Reg: 20878428

ANGUS

SIRE: HOFFMAN THEDFORD

{ S A V PRESIDENT 6847
SCHAUER PRESIDENT 954
 Dam { SCHAUER ACTIVE DUTY 542

COLEMAN CHARLO 0256
 S A V BLACKCAP MAY 4136
 R B ACTIVE DUTY 010
 SCHAUER DAIGGER 4272

BW: 92	Act. WW: 820	Adj. 205: 860	WW Ratio: 122
CED	BW	WW	MILK
-3	+7.2	+103	+33

A powerful son of Thedford that broke the 100 barrier for WW EPD. Ranks in the top 1% for WW and YW EPD. Dam posted an individual WW ratio of 119 and has raised 3 calves with a WW ratio of 112. His G. dam raised 7 calves with a WW ratio of 109



SD ANGUS TOUR



SD ANGUS TOUR

Schauer Bankroll 940

Reg: 19658514 • BD: 03/21/2019

{BARSTOW CASH
BARSTOW BANKROLL B73 **AAA #*18036327**
 Sire {BARSTOW MISS DIANNA Z25
 {S A V RESOURCE 1441
SCHAUER RESOURCE 460 **AAA 18122905**
 Dam {SCHAUER REACHOUT 060

CED	BW	WW	YW	SC	Milk	Doc	CW	Marb	RE	\$W	\$F	\$G	\$B
+1	+4.2	+85	+150	+1.30	+20	+27	+62	+0.42	+0.85	+64	+109	+45	+155

"S-BR" sold in our 2020 sale and we decided to collect him because of his excellent bone structure and natural thickness with added frame and power. He has exceeded our expectations and stamps every calf with depth of rib and flank, wide top, and a big hip. Be sure to check these guys out as many of them were favorites from day one. Look for more calves by him in the future. Owned with Gary Price-Faith, SD

22

SCHAUER BANKROLL 307

Born: 2/19/23 • Reg: 20872730



SIRE: **SCHAUER BANKROLL 940**

{SCHAUER FULL POWER 659
SCHAUER FULL POWER 067
 Dam {SCHAUER CHARLO 606
 PA FULL POWER 1208
 SCHAUER REALLY WINDY 39755
 COLEMAN CHARLO 0256
 SCHAUER FOREVER LADY RT 1507

BW: 83		Act. WW: 805		Adj. 205: 759		WW Ratio: 108			
CED		BW		WW		YW		MILK	
+9		-0.5		+58		+100		+21	

A favorite since the day he was born. This guy is moderate framed, deep, wide topped, with a big hip. His dam is a smaller framed, feminine daughter of Full Power. She has produced 2 calves with a WW ratio of 108.



22

23

SCHAUER BANKROLL 395

Born: 2/19/23 • Reg: 20872776



SIRE: **SCHAUER BANKROLL 940**

{MUSGRAVE AVIATOR
SCHAUER AVIATOR 959
 Dam {SCHAUER EXCITEMENT 575
 KROUPALS B&B IDENTITY
 MCATL FOREVER LADY 1429-138
 BASIN EXCITEMENT
 SCHAUER BISMARCK 9375

BW: 84	Act. WW: 865	Adj. 205: 791	WW Ratio: 113	
CED	BW	WW	YW	MILK
+3	+2.3	+82	+136	+27

A really good son of S-BR with a little more power. Lots of length from hooks to pins with a wide base. Dam has produced 3 calves with a WW ratio of 105.



23

24

SCHAUER BANKROLL 325

Born: 2/22/23 • Reg: 20872732

SIRE: **SCHAUER BANKROLL 940**

{DEER VALLEY FOX TROT 5327

SCHAUER FOX TROT 025

Dam

{SCHAUER EXCITEMENT 584

SANDPOINT BUTKUS X797

SITZ HENRIETTA PRIDE 643T

BASIN EXCITEMENT

SCHAUER FRANKLIN 8425

BW: 93	Act. WW: 740	Adj. 205: 708	WW Ratio: 101	
CED	BW	WW	YW	MILK
-1	+3.9	+81	+133	+16

Another powerful son of S-BR. Dam has 2 calves with a WW ratio of 108.

25

SCHAUER BANKROLL 348

Born: 2/14/23 • Reg: 20872757

SIRE: **SCHAUER BANKROLL 940**

{MUSGRAVE AVIATOR

SCHAUER AVIATOR 748

Dam

{SCHAUER ACTIVE DUTY 448

KROUPALS B&B IDENTITY

MCATL FOREVER LADY 1429-138

R B ACTIVE DUTY 010

SCHAUER LONG DISTANCE 278

BW: 83	Act. WW: 785	Adj. 205: 697	WW Ratio: 99	
CED	BW	WW	YW	MILK
+10	+1.0	+80	+142	+20

Deep, square hipped, wide topped, calving ease son of S-BR. This guy really checks all the boxes. Should work on heifers, produce excellent daughters, and has lots of grow power. Dam has produced 4 calves with a WW ratio of 102.



26

SCHAUER BANKROLL 379

Born: 2/13/23 • Reg: 627445863

SIRE: **SCHAUER BANKROLL 940**

{CONNEALY COUNTDOWN

7903

Dam

{

CONNEALY FINAL SOLUTION

ENTARNA OF CONANGA 140

SCHAUER GRID TOPPER 742

BW: 81	Act. WW: 900	Adj. 205: 796	WW Ratio: 116	
CED	BW	WW	YW	MILK
-	-	-	-	-

Another S-BR that is hard to fault. If your cows don't read or write, this might be the bull for you. He does it all.

27

SCHAUER BANKROLL 308

Born: 2/23/23 • Reg: 627445750

SIRE: **SCHAUER BANKROLL 940**

{CARLSON RIGHT ON 5001

0728

Dam

{

CARLSON RIGHT EFFECT 203

CARLSON ABIGALE 304

COLEMAN CHARLO 0256

BW: 79	Act. WW: 805	Adj. 205: 766	WW Ratio: 112	
CED	BW	WW	YW	MILK
-	-	-	-	-

Should produce excellent daughters as his perfect uddered Right On dam is off to a great start producing 2 calves with a WW ratio of 109.

PF Stunner 020

Reg: +*19861306 • Birth Date: 02/06/2020

{LD CAPITALIST 316
MUSGRAVE 316 STUNNER AAA #18467508
Sire {MCATL BLACKBIRD 831-1378
{MUSGRAVE FOUNDATION
PF LASS 326 AAA #17698229
Dam {SCR LASS 80722

CONNEALY CAPITALIST 028
LD DIXIE ERICA 2053
MCATL PURE PRODUCT 903-55
MCATL BLACKBIRD 1378-573
KESSLERS FRONTMAN R001
MCATL BLACKCAP JUARA 29-434
BT CROSSOVER 758N
W A C LASS 05



CED	BW	WW	YW	SC	Milk	Doc	CW	Marb	RE	\$W	\$F	\$G	\$B
-4	+4.8	+80	+140	+1.34	+29	+8	+77	+0.84	+0.53	+65	+127	+57	+184

I selected 020 at the North Dakota State Select Sale because of his explosive growth and more frame than most Stunner sons.

28

SCHAUER STUNNER 305

Born: 2/25/23 • Reg: 20872752

ANGUS

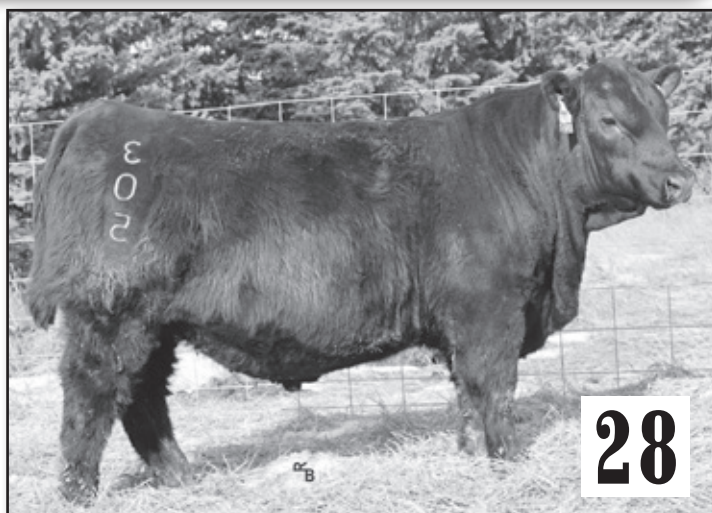
SIRE: **PF STUNNER 020**

{S A V RESOURCE 1441
SCHAUER RESOURCE 705
Dam {SCHAUER GREAT DIVIDE 265

RITO 707 OF IDEAL 3407 7075
S A V BLACKCAP MAY 4136
LIMESTONE GREAT DIVIDE U254
SCHAUER POWER ONE 8605

WHEELER POWER ONE COGS				
BW: 86	Act. WW: 745	Adj. 205: 679	WW Ratio: 97	
CED	BW	WW	YW	MILK
+4	+1.8	+63	+104	+23

Another favorite since day one. This guy sets on a wide base, tremendous bone structure and strong topped.



28

29

SCHAUER STUNNER 397

Born: 2/28/23 • Reg: 20872781

ANGUS

SIRE: **PF STUNNER 020**

{DEER VALLEY FOX TROT 5327
SCHAUER FOX TROT 923
Dam {SCHAUER CHARLO 798

SANDPOINT BUTKUS X797
SITZ HENRIETTA PRIDE 643T
COLEMAN CHARLO 0256
SCHAUER FRONTMAN 293

BW: 87		Act. WW: 800	Adj. 205: 749	WW Ratio: 107
CED	BW	WW	YW	MILK
+5	+1.7	+64	+121	+32

A powerful high growth son of Stunner. Dam has produced 2 calves with a WW ratio of 105. His G. dam produced 5 calves with a WW ratio of 102.

30

SCHAUER STUNNER 310

Born: 3/13/23 • Reg: 20872768

ANGUS

SIRE: **PF STUNNER 020**

{S A V RESOURCE 1441
SCHAUER RESOURCE 897
Dam {SCHAUER DUKE 9710

RITO 707 OF IDEAL 3407 7075
S A V BLACKCAP MAY 4136
SCHAUER DUKE 616
SCHAUER PREMIUM BEEF 7619

BW: 88	Act. WW: 710	Adj. 205: 676	WW Ratio: 96	
CED	BW	WW	YW	MILK
+2	+1.4	+56	+107	+37

A more moderate, square made bull that ranks in the top 4% for milk.



SD ANGUS TOUR



SD ANGUS TOUR



31

SCHAUER STUNNER 378

Born: 2/24/23 • Reg: 20872762

ANGUS

SIRE: **PF STUNNER 020**

{ CONNEALY COUNTDOWN

SCHAUER COUNT DOWN 718

Dam

{ SCHAUER THUNDER 568

CONNEALY FINAL SOLUTION

ENTARNA OF CONANGA 140

CONNEALY THUNDER

SCHAUER CISCO 208

BW: 95	Act. WW: 775	Adj. 205: 705	WW Ratio: 100	
CED	BW	WW	YW	MILK
+3	+0.9	+61	+115	+35

A bigger framed, super clean made son of Stunner. His dam posted a WW ratio of 112.

32

SCHAUER STUNNER 380

Born: 3/31/23 • Reg: 20872764

ANGUS

{ MUSGRAVE 316 STUNNER

WCF STUNNER 922

Sire

{ WC BLACKCAP 7290

{ S A V RESOURCE 1441

SCHAUER RESOURCE 800

Dam

{ SCHAUER REACHOUT 060

LD CAPITALIST 316

MCATL BLACKBIRD 831-1378

CONNEALY COUNTDOWN

WC BLACKCAP 5372

RITO 707 OF IDEAL 3407 7075

S A V BLACKCAP MAY 4136

MCATL REACHOUT 836

SCHAUER TRADITION 6750

BW: 88	Act. WW: 720	Adj. 205: 726	WW Ratio: 103	
CED	BW	WW	YW	MILK
+4	+2.1	+67	+118	+23

Another moderate framed Stunner with balanced EPDs from a moderate deep ribbed Resource daughter. His G. dam produced 12 calves with a WW ratio of 102.

R5 Stunner H126

Reg: 20014080 • Birth Date: 02/10/2020

{ LD CAPITALIST 316

MUSGRAVE 316 STUNNER AAA #*18467508

Sire

{ MCATL BLACKBIRD 831-1378

{ HOOVER HAWKEYE

R5 PRINCESS F82

AAA 19983452

Dam

{ T K PRINCESS R345

CONNEALY CAPITALIST 028

LD DIXIE ERICA 2053

MCATL PURE PRODUCT 903-55

MCATL BLACKBIRD 1378-573

MOGCK BULLSEYE

MISS BLACKCAP ELLSTON K97

T K GATEWAY

T K PRINCESS N191

CED	BW	WW	YW	SC	Milk	Doc	CW	Marb	RE	\$W	\$F	\$G	\$B
-2	+4.2	+84	+137	+0.23	+27	+17	+71	+0.75	+0.35	+71	+118	+47	+165

"Fatty" was selected from the Reppe sale primarily for his exceptional depth of rib and muscle mass. He is extremely docile and easy fleshing.



33

SCHAUER STUNNER 338

Born: 3/16/23 • Reg: 20872778

ANGUS

SIRE: **R5 STUNNER H126**

{ S FOUNDATION 514

SCHAUER FOUNDATION 938

Dam

{ SCHAUER IMPRESSIVE 638

VISION UNANIMOUS 1418

S LADY ANN 8384

MOHNEN IMPRESSIVE 1093

SCHAUER RIGHT ANSWER 9238

BW: 87	Act. WW: 695	Adj. 205: 682	WW Ratio: 97	
CED	BW	WW	YW	MILK
+5	+1.4	+60	+101	+20

Really nice maternal pedigree from this moderate Stunner son with balanced EPDs.



SD ANGUS TOUR

34

SCHAUER STUNNER 300

Born: 2/13/23 • Reg: 20872734

ANGUS 300

SIRE: **R5 STUNNER H126**

{MCATL REACHOUT 836

SCHAUER REACHOUT 060

Dam

{SCHAUER TRADITION 6750

CONNEALY REFLECTION

MA LADY BARBARA 453

SITZ TRADITION RLS 8702

CARLSON ZOOMER B174

BW: 60	Act. WW: 765	Adj. 205: 697	WW Ratio: 99	
CED	BW	WW	YW	MILK
+4	+1.2	+56	+89	+22

This positive energy bull's dam produced 12 calves with a WW ratio of 102.



35

35

SCHAUER CAPITALIST 342

Born: 3/19/23 • Reg: 20872742

ANGUS 300

{LD CAPITALIST 316

RCL FAST HAND

Sire

{RCL BLACKBIRD 8531

{S A V PRIORITY 7283

SCHAUER PRIORITY 462

Dam

{SCHAUER GREAT DIVIDE 262

CONNEALY CAPITALIST 028

LD DIXIE ERICA 2053

RCL LITHIUM

RCL BLACKBIRD 531

S A V FINAL ANSWER 0035

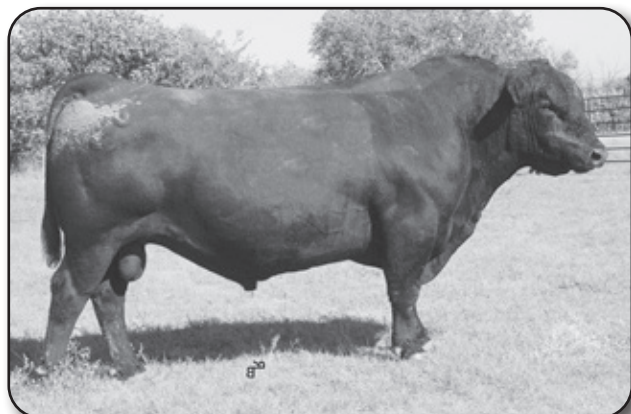
S A V BLACKCAP MAY 5530

LIMESTONE GREAT DIVIDE U254

SCHAUER BISMARCK 9962

BW: 92	Act. WW: 870	Adj. 205: 842	WW Ratio: 120	
CED	BW	WW	YW	MILK
+3	+2.6	+88	+135	+28

Pure power! This guy is long bodied and super stout. His dam posted an individual WW ratio of 111, and raised 6 calves with a ratio of 105. G. dam had 4 calves with a WW ratio of 105.



RCL FAST HAND - SIRE OF LOT 35

Musgrave Grazer 201-1247

Reg: *20091412 • Birth Date: 01/03/2021

{BASIN PAYWEIGHT 1682
LD GRAZER 7090 AAA +*19195413

Sire {LD BLACKCAP 4793

{LD CAPITALIST 316

MUSGRAVE LADY BARBARA 1247 AAA 18774434

Dam {MUSGRAVE LADY BARBARA 22-546

BASIN PAYWEIGHT 006S
21AR O LASS 7017
SITZ UPWARD 307R
G A R RETAIL PRODUCT 1725

CONNELLY CAPITALIST 028
LD DIXIE ERICA 2053
MCATL PURE PRODUCT 903-55
M A LADY BARBARA 546-723

CED	BW	WW	YW	SC	Milk	Doc	CW	Marb	RE	\$W	\$F	\$G	\$B
+7	+1.3	+76	+133	-0.04	+20	+23	+69	+0.71	+0.89	+65	+117	+60	+178

Grazer was selected as one of the top selling bulls in the Musgrave sale because of his overall natural thickness and the two proven sires, 1682 and Capitalist 316. Expect his sons to add length and maternal ability.



36 SCHAUER GRAZER 369

Born: 3/17/23 • Reg: 20872749



SIRE: MUSGRAVE GRAZER 201-1247

{COLEMAN CHARLO 0256

SCHAUER CHARLO 653

Dam

{SCHAUER GRID TOPPER 96053

O C C PAXTON 730P

BOHI ABIGALE 6014

SCHAUER GRID TOPPER 742

SCHAUER BIG TIME 6053

SUMMER 2024 TIME 0000				
BW: 91	Act. WW: 750	Adj. 205: 722	WW Ratio: 103	
CED	BW	WW	YW	MILK
+2	+2.8	+75	+128	+25

A powerful son of Grazer. Dam has a very impressive WW ratio of 108 on 6.



COLEMAN CHARLO 0256 - MATERNAL GRANDSIRE TO MANY BULLS SELLING

37 SCHAUER GRAZER 316

Born: 3/16/23 • Reg: 20872765



SIRE: MUSGRAVE GRAZER 201-1247

{COLEMAN CHARLO 3212

SCHAUER CHARLO 812

Dam

{SCHAUER IN FOCUS 19642

COLEMAN CHARLO 0256

COLEMAN DONNA 714

MYTTY IN FOCUS

SCHAUER RIGHT ANSWER 9642

BW: 83	Act. WW: 700	Adj. 205: 672	WW Ratio: 96	
CED	BW	WW	YW	MILK
+6	-0.5	+73	+123	+25

Impressive birth to weaning EPD spread. His dam by Charlo posted an individual WW ratio of 110. I think he should work on heifers.

38 SCHAUER GRAZER 387

Born: 3/14/23 • Reg: 20872746



SIRE: MUSGRAVE GRAZER 201-1247

{WHITSTONE CISCO KID Z120

SCHAUER CISCO 687

Dam

{SCHAUER EAGLE EYE 087

S A V PIONEER 7301

BOYD ALTUNE 7304

BC EAGLE EYE 110-7

SCHAUER KENNEL 587

BW: 85	Act. WW: 735	Adj. 205: 701	WW Ratio: 100	
CED	BW	WW	YW	MILK
+7	-0.6	+67	+120	+26

A smaller framed son of Grazer from a deep bodied, easy fleshing Cisco Kid daughter who has produced 4 calves with a WW ratio of 101.



TEX Playbook 5437

Reg: #+*18414912 • Birth Date: 08/03/2015

{BASIN PAYWEIGHT 006S
BASIN PAYWEIGHT 1682 AAA #+*17038724

Sire {21AR O LASS 7017

{SUMMITCREST COMPLETE 1P55

RITA 1C43 OF 9M26 COMPLETE AAA +*17131969

Dam {RITA 9M26 OF RITA 5F56 PRED

VERMILION PAYWEIGHT J847
BASIN LUCY 3829
HARB PENDLETON 765 J H
21AR O LASS F24A

C F RIGHT DESIGN 1802
SUMMITCREST ELBA 1M17
G A R PREDESTINED
RITA 5F56 OF 1198 FD

CED	BW	WW	YW	SC	Milk	Doc	CW	Marb	RE	\$W	\$F	\$G	\$B
+12	-0.1	+60	+103	+1.02	+36	+26	+37	+0.59	+0.35	+90	+81	+45	+126

Playbook calves are quiet tempered, deep bodied, structurally correct cattle with exceptional eye appeal.

39

SCHAUER PLAYBOOK 319

Born: 2/23/23 • Reg: 20873641

ANGUS

SIRE: **TEX PLAYBOOK 5437**

{SCHAUER BANKROLL 926

SCHAUER KINDNESS PRIDE 19710

Dam

{SCHAUER POWER POINT 951

BARSTOW BANKROLL B73

SCHAUER LONG DISTANCE 298

S POWERPOINT WS 5503

SCHAUER EFFECTIVE 710

BW: 82	Act. WW: 720	Adj. 205: 721	WW Ratio: 103	
CED	BW	WW	YW	MILK
+6	+1.2	+61	+102	+33

I really think blending Playbook with S-BR should produce awesome females.

40

SCHAUER PLAYBOOK 336

Born: 2/20/23 • Reg: 20873636

ANGUS

SIRE: **TEX PLAYBOOK 5437**

{WCF STUNNER 922

SCHAUER PRIMROSE 193

Dam

{SCHAUER PLAYBOOK 933

MUSGRAVE 316 STUNNER

WC BLACKCAP 7290

TEX PLAYBOOK 5437

SCHAUER MISSING LINK 36873

BW: 72	Act. WW: 700	Adj. 205: 698	WW Ratio: 99	
CED	BW	WW	YW	MILK
+6	+0.8	+69	+119	+32

Double bred Playbook with Stunner in the mix should be another cow maker stemming from a long line of great uddered cows. I think he should work on heifers.

PF Atlantis 139

Reg: 20193104 • Birth Date: 02/09/2021

{S A V RAINFALL 6846

SQUARE B ATLANTIS 8060 AAA +*19405249

Sire

{ELBANNA OF CONANGA 1209

{CONNEALY IN FOCUS 4925

PF QUEEN MOTHER 421 AAA 18004775

Dam

{PF QUEEN MOTHER 2111

COLEMAN CHARLO 0256

S A V BLACKCAP MAY 4136

CONNEALY CONSENSUS

ELBASTA OF CONANGA 9703

MYTTY IN FOCUS

BLACK CANA OF CONANGA 206

H C C FINAL ANSWER 9956

PF QUEEN MOTHER 0100

CED	BW	WW	YW	SC	Milk	Doc	CW	Marb	RE	\$W	\$F	\$G	\$B
+2	+1.8	+69	+116	+1.15	+30	+10	+47	+0.56	+0.76	+71	+98	+48	+145

Atlantis was selected at the North Dakota State Select sale because of added frame and exceptional base width.

SQUARE B ATLANTIS 8060



41

SCHAUER ATLANTIS 301

Born: 3/16/23 • Reg: 20872782

ANGUS

{SQUARE B ATLANTIS 8060

PF ATLANTIS 139

Sire

{PF QUEEN MOTHER 421

{TEX PLAYBOOK 5437

SCHAUER PLAYBOOK 041

Dam

{SCHAUER CONSENSUS 39141

S A V RAINFALL 6846

ELBANNA OF CONANGA 1209

CONNEALY IN FOCUS 4925

PF QUEEN MOTHER 2111

BASIN PAYWEIGHT 1682

RITA 1C43 OF 9M26 COMPLETE

CONNEALY CONSENSUS 7229

RIVER HILLS PRIDE W141

BW: 77	Act. WW: 735	Adj. 205: 742	WW Ratio: 106	
CED	BW	WW	YW	MILK
+6	+1.6	+69	+110	+35

Phenotypically correct son of Atlantis with good performance. His dam has produced 2 calves with a WW ratio of 106. G. dam recorded 8 calves @ 106.

42

SCHAUER ATLANTIS 332

Born: 3/8/23 • Reg: 20872773

ANGUS

{SQUARE B ATLANTIS 8060

PF ATLANTIS 139

Sire

{PF QUEEN MOTHER 421

{MUSGRAVE AVIATOR

SCHAUER AVIATOR 907

Dam

{SCHAUER IMPRESSIVE 527

S A V RAINFALL 6846

ELBANNA OF CONANGA 1209

CONNEALY IN FOCUS 4925

PF QUEEN MOTHER 2111

KROUPALS B&B IDENTITY

MCATL FOREVER LADY 1429-138

MOHNEN IMPRESSIVE 1093

SCHAUER LONG DISTANCE 287

BW: 77	Act. WW: 700	Adj. 205: 671	WW Ratio: 95	
CED	BW	WW	YW	MILK
+6	-0.4	+62	+108	+31

Another moderate framed son of Grazer that I think will work on heifers. Dam has a WW ratio of 105 on 2.

Classic Cowboy Up 726

Reg: 18990341 • BD: 03/13/2017

{ HA OUTSIDE 3008
HA Cowboy Up 5405 **AAA #*18286467**
 Sire { HA BLACKCAP LADY 1602
 { CARLSON RIGHT TIME 915
CARLSON HEATHER BLOOM 202 **AAA 17453756**
 Dam { CARLSON DANNY BOY 626

CED	BW	WW	YW	SC	Milk	Doc	CW	Marb	RE	\$W	\$F	\$G	\$B
+4	+1.4	+57	+102	+1.70	+26	+23	+0.31	+0.01	-0.02	+55	+76	+11	+88

Cowboy Up was selected from Classic Angus for his wide top and phenomenal depth of rib.

43

SCHAUER Cowboy Up 359

Born: 3/14/23 • Reg: 20872743



{ HA Cowboy Up 5405
CLASSIC Cowboy Up 726
 Sire { CARLSON HEATHER BLOOM 202
 { R B TOUR OF DUTY 177
SCHAUER TOUR OF DUTY 510
 Dam { SCHAUER DUKE 9710
 HA OUTSIDE 3008
 HA BLACKCAP LADY 1602
 CARLSON RIGHT TIME 915
 CARLSON DANNY BOY 626
 WERNER WAR PARTY 2417
 B A LADY 6807 305
 SCHAUER DUKE 616
 SCHAUER PREMIUM BEEF 7619

SCHOER PREMIUM BEEF 7019				
BW: 87	Act. WW: 775	Adj. 205: 739	WW Ratio: 105	
CED	BW	WW	YW	MILK
+7	-0.2	+54	+91	+38

One of the top candidates for replacement females. Moderate birth and good growth from a very productive cow family. Dam has 7 calves with a WW ratio of 104. G. dam has 9 calves with a WW ratio of 108.

44

SCHAUER Cowboy Up 363

Born: 3/9/23 • Reg: 20872751



{ HA Cowboy Up 5405
CLASSIC Cowboy Up 726
 Sire { CARLSON HEATHER BLOOM 202
 { SCHAUER ACTIVE DUTY 460
SCHAUER ACTIVE DUTY 713
 Dam { SCHAUER LND 878-18563
 HA OUTSIDE 3008
 HA BLACKCAP LADY 1602
 CARLSON RIGHT TIME 915
 CARLSON DANNY BOY 626
 R B ACTIVE DUTY 010
 SCHAUER IN FOCUS 8650
 LEACHMAN NEW DESIGN 878-4570
 SCHAUER FRANKLIN 8563

BW: 83	Act. WW: 770	Adj. 205: 724	WW Ratio: 103	
CED	BW	WW	YW	MILK
+7	+1.6	+64	+111	+24

Another Cowboy Up that will produce excellent daughters. Dam has 5 calves with a WW ratio of 102.

45

SCHAUER Cowboy Up 337

Born: 3/11/23 • Reg: 20872783



{ CLASSIC Cowboy Up 726
SCHAUER Cowboy Up 179
 Sire { SCHAUER CHARLO 679
 { RHR HOOVER DAM X741
SCHAUER HOOVER DAM 3327
 Dam { SCHAUER KENNEL 327
 HA Cowboy Up 5405
 CARLSON HEATHER BLOOM 202
 COLEMAN CHARLO 0256
 SCHAUER HOOVER DAM 059
 HOOVER DAM
 RIVER HILLS 7R8 S808
 ALC KENNEL 1K
 N R MISS HUSKER 327

BW: 97	Act. WW: 740	Adj. 205: 722	WW Ratio: 103	
CED	BW	WW	YW	MILK
-6	+3.4	+60	+94	+19

A double digit energy bull from an exceptional daughter of Hoover Dam that has stood the test of time. She has produced 9 calves with a WW ratio of 103. G. dam produced 12 calves with a WW ratio of 106.

46

SCHAUER PRESIDENT 375

Born: 3/5/23 • Reg: 20872761



{ S A V PRESIDENT 6847
CARLSON PRESIDENT 0190
 Sire { S A V EMBLYNETTE 8254
 { CONNEALY ARSENAL 2174
SCHAUER ARSENAL 795
 Dam { SCHAUER BISMARCK 9375
 COLEMAN CHARLO 0256
 S A V BLACKCAP MAY 4136
 S A V BISMARCK 5682
 S A V EMBLYNETTE 3123
 CONNEALY PACKER 547
 BLACK RICE OF CONANGA 9529
 S A V BISMARCK 5682
 SCHAUER RIGHT TIME 375

BW: 82	Act. WW: 730	Adj. 205: 679	WW Ratio: 97	
CED	BW	WW	YW	MILK
+7	+2.0	+52	+85	+26

A deep bodied, correct son of President with positive energy and balanced EPDs.

47

SCHAUER Rico 377

Born: 3/27/23 • Reg: 20872739



{ MUSGRAVE RICOCHET
MUSGRAVE RICOCHET 2079
 Sire { MUSGRAVE ESTHER 1843-0110
 { HA Cowboy Up 5405
SCHAUER HENRIETTA PRIDE 173
 Dam { DEER VALLEY HENRIETTA 2908
 MUSGRAVE APACHE
 SANDPOINT LUCY 2421
 V A R LEGEND 5019
 MUSGRAVE ESTHER 0110-55
 HA OUTSIDE 3008
 HA BLACKCAP LADY 1602
 SUMMITCREST COMPLETE 1P55
 SITZ HENRIETTA PRIDE 643T

BW: 81	Act. WW: 730	Adj. 205: 794	WW Ratio: 113	
CED	BW	WW	YW	MILK
+6	+1.5	+76	+132	+28

Awesome maternal pedigree stemming from Deer Valley Henrietta 2908.

48

SCHAUER GUARANTEE 306

Born: 3/29/23 • Reg: 20873721



{ CONNEALY PAYRAISE

CRAWFORD GUARANTEE 9137

Sire

{ CRAWFORD Ms ARMORY D40

{ COLEMAN CHARLO 0256

SCHAUER CHARLO 607

Dam

{ SCHAUER PRIORITY 407

BASIN PAYWEIGHT 1682

PRIDE FAIR OF CONANGA 351

CONNEALY ARMORY

G A R NEW DAY N2290

O C C PAXTON 730P

BOHI ABIGALE 6014

S A V PRIORITY 7283

SCHAUER QUEEN MOTHER RT 801

BW: 64	Act. WW: 720	Adj. 205: 721	WW Ratio: 103	
CED	BW	WW	YW	MILK
+12	-1.6	+64	+116	+35

A moderate framed, sure shot heifer bull by Guarantee. Dam has a BW ratio of 6 @ 99 and a WW ratio of 6@ 106.

49

SCHAUER GUARANTEE 394

Born: 3/28/23 • Reg: 20873719



{ CONNEALY PAYRAISE

CRAWFORD GUARANTEE 9137

Sire

{ CRAWFORD Ms ARMORY D40

{ S FOUNDATION 514

SCHAUER FOUNDATION 942

Dam

{ SCHAUER GREAT DIVIDE 742

BASIN PAYWEIGHT 1682

PRIDE FAIR OF CONANGA 351

CONNEALY ARMORY

G A R NEW DAY N2290

VISION UNANIMOUS 1418

S LADY ANN 8384

SCHAUER GREAT DIVIDE 574

SCHAUER IN FOCUS 19642

BW: 75	Act. WW: 775	Adj. 205: 788	WW Ratio: 112	
CED	BW	WW	YW	MILK
+6	-0.2	+70	+126	+33

Excellent birth to weaning spread from a top producing cow family. Dam has 3 calves with a WW ratio of 110. G. dam produced 5 calves with a WW ratio of 107.

50

SCHAUER LANDMARK 356

Born: 3/16/23 • Reg: 20872770



{ CIRCLE L LANDMARK

MUSGRAVE LANDMARK 1440

Sire

{ MUSGRAVE MOONBEAM 1378-234

{ COLEMAN CHARLO 3212

SCHAUER CHARLO 856

Dam

{ SCHAUER EXCITEMENT 536

CIRCLE L GUS

CIRCLE L QUEEN 307B

LD CAPITALIST 316

MUSGRAVE MOONBEAM 234 211

COLEMAN CHARLO 0256

COLEMAN DONNA 714

BASIN EXCITEMENT

SCHAUER MISSING LINK 37156

BW: 94	Act. WW: 760	Adj. 205: 730	WW Ratio: 104	
CED	BW	WW	YW	MILK
+1	+3.2	+79	+136	+18

A real solid son of Landmark. Dam has 3 calves with a WW ratio of 102. G. dam produced 4 calves with a WW ratio of 110.



51

SCHAUER IN FOCUS 390

Born: 2/28/23 • Reg: 20872775



{ MYTTY IN FOCUS

SCHAUER IN FOCUS 759

Sire

{ SCHAUER BANDO 519

{ MUSGRAVE AVIATOR

SCHAUER AVIATOR 931

Dam

{ SCHAUER BULLSEYE 511

S A F FOCUS OF E R

MYTTY COUNTESS 906

L T 598 BANDO 9074

SCHAUER CINCHA 3119

KOUPLS B&B IDENTITY

MCATL FOREVER LADY 1429-138

WAR BULLSEYE 817-317

SCHAUER CONSENSUS 3110

BW: 90	Act. WW: 760	Adj. 205: 713	WW Ratio: 101	
CED	BW	WW	YW	MILK
+8	+1.9	+67	+122	+23

A blast from the past. In Focus was one of our top selling bulls in '08 and still does a nice job. Dam posted a WW ratio of 106.

52

SCHAUER EXCLUSIVE 355

Born: 4/7/23 • Reg: 20872780



{ MUSGRAVE 316 EXCLUSIVE

SCHAUER EXCLUSIVE 194

Sire

{ SCHAUER COURAGE 694

{ TEX PLAYBOOK 5437

SCHAUER PLAYBOOK 945

Dam

{ SCHAUER SURE SHOT 405

LD CAPITALIST 316

MUSGRAVE PRIM LASSIE 163-386

CONNEALY COURAGE 25L

SCHAUER GAME DAY 094

BASIN PAYWEIGHT 1682

RITA 1C43 OF 9M26 COMPLETE

MOGCK SURE SHOT

SCHAUER FRONT MAN 19755

BW: 88	Act. WW: 740	Adj. 205: 781	WW Ratio: 111	
CED	BW	WW	YW	MILK
+3	+3.1	+90	+158	+33

Sheer power from our top selling bull in '22. This young bull is very correct and stands on a great set of feet. His dam has 3 calves with a WW ratio of 110.

2-YEAR OLD BULLS



53

SCHAUER REGIMENT 216

Born: 2/3/22 • Reg: 20579738

{WAR CAVALRY B063 Z044

WILKS REGIMENT 9035

Sire

{VINTAGE CHLOE 6137

{CLASSIC COWBOY UP 726

SCHAUER COWBOY UP 001

Dam

{SCHAUER COURAGE 667

CONNEALY CAVALRY 1149

WAR CC&7 Z044 X029

V A R EMPIRE 3037

V A R CHLOE 2227

HA COWBOY UP 5405

CARLSON HEATHER BLOOM 202

CONNEALY COURAGE 25L

SCHAUER FINAL ANSWER 267

BW: 78	Act. WW: 878	Adj. 205: 803	WW Ratio: 118	
CED	BW	WW	YW	MILK
+9	+1.2	+80	+144	+31

This guy is a powerful, no holes dude. He's wide based, long bodied with a very attractive pedigree loaded with performance and maternal power.



54

SCHAUER STUNNER 240

Born: 4/19/22 • Reg: 20578731

{MUSGRAVE 316 STUNNER

R5 STUNNER H126

Sire

{R5 PRINCESS F82

{COLEMAN CHARLO 0256

SCHAUER CHARLO 607

Dam

{SCHAUER PRIORITY 407

LD CAPITALIST 316

MCATL BLACKBIRD 831-1378

HOOVER HAWKEYE

T K PRINCESS R345

O C C PAXTON 730P

BOHI ABIGALE 6014

S A V PRIORITY 7283

SCHAUER QUEEN MOTHER RT 801

BW: 94	Act. WW: 706	Adj. 205: 707	WW Ratio: 104	
CED	BW	WW	YW	MILK
-1	+3.9	+68	+114	+29

Another powerful two-year-old from a very productive cow family. Dam has 6 calves with a WW ratio of 106.

55

SCHAUER CIRCUIT BREAKER 284

Born: 2/15/22 • Reg: 20577183

{S A V RECHARGE 3436

S A V CIRCUIT BREAKER 7136

Sire

{S A V MADAME PRIDE 3145

{S A V RESOURCE 1441

SCHAUER RESOURCE 804

Dam

{SCHAUER MOTIVE 294

RITO 707 OF IDEAL 3407 7075

S A V BLACKCAP MAY 4136

S A V PRIORITY 7283

S A V MADAME PRIDE 1171

RITO 707 OF IDEAL 3407 7075

S A V BLACKCAP MAY 4136

SOO LINE MOTIVE 9016

SCHAUER NEW DESIGN 9304

BW: 98	Act. WW: 790	Adj. 205: 693	WW Ratio: 101	
CED	BW	WW	YW	MILK
-3	+4.1	+68	+125	+17

Added frame and growth from this Circuit Breaker son.

56

SCHAUER PRESIDENT 283

Born: 4/5/22 • Reg: 20577187

{S A V PRESIDENT 6847

CARLSON PRESIDENT 0190

Sire

{S A V EMBLYNETTE 8254

{LD CAPITALIST 316

SCHAUER CAPITALIST 839

Dam

{SCHAUER MOTIVE 39250

COLEMAN CHARLO 0256

S A V BLACKCAP MAY 4136

S A V BISMARCK 5682

S A V EMBLYNETTE 3123

CONNEALY CAPITALIST 028

LD DIXIE ERICA 2053

SOO LINE MOTIVE 9016

SCHAUER IN FOCUS 9250

BW: 83	Act. WW: 705	Adj. 205: 690	WW Ratio: 101	
CED	BW	WW	YW	MILK
+8	+1.6	+53	+94	+26

I really like the pedigree on this guy. His dam looks just as you would think. She's moderate framed with lots of rib and shape.

57

SCHAUER PRESIDENT 219

Born: 4/1/22 • Reg: 20577179

{S A V PRESIDENT 6847

CARLSON PRESIDENT 0190

Sire

{S A V EMBLYNETTE 8254

{ELLINGSON CHAPS 4095

SCHAUER CHAPS 806

Dam

{SCHAUER MOTIVE 263

COLEMAN CHARLO 0256

S A V BLACKCAP MAY 4136

S A V BISMARCK 5682

S A V EMBLYNETTE 3123

S A V RESOURCE 1441

E A BLACKCAP 0360

SOO LINE MOTIVE 9016

SCHAUER BIG TIME 6873

BW: 85	Act. WW: 670	Adj. 205: 649	WW Ratio: 95	
CED	BW	WW	YW	MILK
+5	+2.1	+53	+93	+24

A stylish, smooth fronted, big hipped son of President.



58

SCHAUER LANDMARK 266

Born: 3/29/22 • Reg: 20577108

{CIRCLE L LANDMARK

MUSGRAVE LANDMARK 1440

Sire

{MUSGRAVE MOONBEAM 1378-234

{WHITSTONE CISCO KID Z120

SCHAUER CISCO 636

Dam

{SCHAUER IN FOCUS 338-6

CIRCLE L GUS

CIRCLE L QUEEN 307B

LD CAPITALIST 316

MUSGRAVE MOONBEAM 234 211

S A V PIONEER 7301

BOYD ALTUNE 7304

SCHAUER IN FOCUS 759

SCHAUER DYNASTY 386

BW: 90	Act. WW: 768	Adj. 205: 720	WW Ratio: 105	
CED	BW	WW	YW	MILK
+1	+3.9	+71	+123	+22

Dam has produced 5 calves with a WW ratio of 105.

59

SCHAUER EXCLUSIVE 235

Born: 3/17/22 • Reg: 20577279

{LD CAPITALIST 316

MUSGRAVE 316 EXCLUSIVE

Sire

{MUSGRAVE PRIM LASSIE 163-386

{MOHNEN IMPRESSIVE 1093

SCHAUER IMPRESSIVE 595

Dam

{SCHAUER REALLY WINDY 39755

CONNEALY CAPITALIST 028

LD DIXIE ERICA 2053

MUSGRAVE FOUNDATION

SCR PRIM LASSIE 80634

BASIN EXCITEMENT

MOHNEN JILT 787

V D A R REALLY WINDY 4097

SCHAUER NEW DESIGN 9755

BW: 80	Act. WW: 736	Adj. 205: 669	WW Ratio: 98	
CED	BW	WW	YW	MILK
+11	-0.7	+57	+100	+27

Another calving ease son of Exclusive. Dam records 7 calves with a BW ratio of 97 and a WW ratio of 103.

60

SCHAUER EXCLUSIVE 207

Born: 2/1/22 • Reg: 20577681

{LD CAPITALIST 316

MUSGRAVE 316 EXCLUSIVE

Sire

{MUSGRAVE PRIM LASSIE 163-386

{MUSGRAVE AVIATOR

SCHAUER AVIATOR 907

Dam

{SCHAUER IMPRESSIVE 527

CONNEALY CAPITALIST 028

LD DIXIE ERICA 2053

MUSGRAVE FOUNDATION

SCR PRIM LASSIE 80634

KROUPALS B&B IDENTITY

MCATL FOREVER LADY 1429-138

MOHNEN IMPRESSIVE 1093

SCHAUER LONG DISTANCE 287

BW: 75	Act. WW: 890	Adj. 205: 782	WW Ratio: 114	
CED	BW	WW	YW	MILK
+9	-0.5	+68	+118	+28

A calving ease son of Exclusive with excellent performance. We used this guy for clean up on our heifers last spring.





61

SCHAUER LANDMARK 241

Born: 2/27/22 • Reg: 20577138

{CIRCLE L LANDMARK		CIRCLE L GUS		
<u>MUSGRAVE LANDMARK 1440</u>		CIRCLE L QUEEN 307B		
Sire		LD CAPITALIST 316		
{MUSGRAVE MOONBEAM 1378-234		MUSGRAVE MOONBEAM 234 211		
{SCHAUER IN FOCUS759		MYTTY IN FOCUS		
<u>SCHAUER IN FOCUS 741</u>		SCHAUER BANDO 519		
Dam		WHITESTONE CISCO KID Z120		
{SCHAUER CISCO 241		RIVER HILLS RUBY W241		
BW: 76		Act. WW: 725	Adj. 205: 633	WW Ratio: 93
CED	BW	WW	YW	MILK
+8	+0.7	+65	+114	+17

Another 2-year-old that I feel would work on heifers.

62

SCHAUER COWBOY UP 285

Born: 2/27/22 • Reg: 20577153

{HA COWBOY UP 5405		HA OUTSIDE 3008	
<u>CLASSIC COWBOY UP 726</u>		HA BLACKCAP LADY 1602	
Sire		CARLSON RIGHT TIME 915	
{CARLSON HEATHER BLOOM 202		CARLSON DANNY BOY 626	
{SCHAUER IN FOCUS 759		MYTTY IN FOCUS	
<u>SCHAUER RESOURCE 715</u>		SCHAUER BANDO 519	
Dam		S A V RESOURCE 1441	
{SCHAUER RESOURCE 505		SCHAUER IN FOCUS 085	

BW: 82	Act. WW: 820	Adj. 205: 716	WW Ratio: 105	
CED	BW	WW	YW	MILK
+6	+1.1	+59	+104	+24

This guy had an eye injury last winter and lost some of his vision. I think he is too good regardless of the eye issue. All of his necessary equipment is still very much intact.

63

SCHAUER PRESIDENT 261

Born: 3/9/22 • Reg: 20577015

{S A V PRESIDENT 6847		COLEMAN CHARLO 0256	
<u>CARLSON PRESIDENT 0190</u>		S A V BLACKCAP MAY 4136	
Sire		S A V BISMARCK 5682	
{S A V EMBLYNETTE 8254		S A V EMBLYNETTE 3123	
{CARLSON RIGHT ON 5001		CARLSON RIGHT EFFECT 203	
<u>SCHAUER RIGHT ON 061</u>		CARLSON ABIGALE 304	
Dam		S A V INSTINCT 4258	
{SCHAUER INSTINCT 761		SCHAUER LND 261	

BW: 83	Act. WW: 668	Adj. 205: 665	WW Ratio: 97	
CED	BW	WW	YW	MILK
+3	+3.8	+60	+104	+25

Extremely deep ribbed with lots of capacity.



64

SCHAUER LANDMARK 287

Born: 3/25/22 • Reg: 627051327

{	CIRCLE L LANDMARK	CIRCLE L GUS
	<u>MUSGRAVE LANDMARK 1440</u>	CIRCLE L QUEEN 307B
	Sire	LD CAPITALIST 316
	{MUSGRAVE MOONBEAM 1378-234	MUSGRAVE MOONBEAM 234 211
{	SCHAUER FULL POWER 659	PA FULL POWER 1208
		SCHAUER REALLY WINDY 39755
		TC GRID TOPPER 355
Dam		
{		

BW: 84	Act. WW: 740	Adj. 205: 723	WW Ratio: 105	
CED	BW	WW	YW	MILK
-	-	-	-	-

Extra length, frame, and style from this powerful son of Landmark.



SCHAUER ANGUS

FAITH, SOUTH DAKOTA

**PO Box 425
Faith, SD 57626**

