



30th Annual Angus Bull Sale
MONDAY,
MARCH 9, 2020

———— 1:00 p.m. MT ————
Faith (SD) Livestock Auction

Bryant Schauer
(605) 739-5621
Cell: (605) 490-9528



Doug & Amie Schauer
(605) 967-2611
Faith, SD 57626

Cattle Producers,

Welcome and thank you for your interest in our program. Wow, I can't believe it's sale time again! It was a crazy year weather-wise and we hope 2020 is a little more normal. Whatever that is! LOL

With all the competition in the bull business, we believe and understand you need to have a plan and a program that is recognizable. At Schauer Angus we believe in everything in moderation. This includes frame size, numbers, and feed intake. We don't play the number game, and we don't push or pamper our cattle. What you see is what you get.

Our goal is to produce moderate framed, high maternal, easy calving, functional, low maintenance cattle with longevity. As you study our pedigrees, I think you will see it's a path we have followed from the beginning. This set of bulls is the top 1/3 of our calf crop and from top to bottom, the strongest we have ever offered.

As always, customer satisfaction is paramount at Schauer Angus. We have a first breeding season guarantee and will do our part to help ensure your experience of owning a Schauer bull is a positive one.

Once again, thank you and feel free to call anytime. We look forward to seeing you sale day.

Sincerely, Bryant Schauer

(605) 490-9528 – cell

30th ANNUAL PRODUCTION SALE

Monday, March 9, 2020

1:00 p.m. (MT)

Faith (SD) Livestock Commission
Sale Day Phone: (605) 967-2200

SELLING:

50 Yearling Bulls
9 Two-Year-Old Angus Bulls

AUCTIONEER: Seth Weishaar
(605) 210-1124

SALE REPRESENTATIVES:

Beau Ravellette, RPI Promotions-Invite 605-685-8155
Donnie Leddy, Cattle Business Weekly 605-695-0113
Dan Piroutek, Tri-State Livestock News 605-544-3316

TRUCKING: Free trucking up to 250 miles. Deduct \$100 if you take home sale day. Bulls kept free until April 15th.

HEALTH: All bulls will be accompanied by proper health certificates for immediate shipping.

Birth: Alpha CD, CattlActive

Branding: Vista Once, Vision 7 20/20

Pre Weaning: Ultrabac 7 Somnus; Vista Once

Weaning: Poured with Dectomax

January: Poured with Clean Up

• Bulls will be semen tested and ultrasounded by sale day.

LUNCH: Free lunch will be served prior to the sale.

FIRST BREEDING SEASON GUARANTEE

All bulls will be covered 50% by Schauer Angus Ranch if they are injured during their first breeding season. Breeding season is defined as the 60-day period following the first turnout of the bulls.

50% of the purchase price, minus half the salvage value, will be given as credit towards a replacement bull, if we have one available, or as credit at next year's sale.

1. All injured bulls must be diagnosed by a licensed veterinarian.

2. We must be notified should injury occur and before bull is sold for salvage. A copy of the salvage receipt must be sent to us.

3. All claims must be made by September 1, 2020.

Bryant Schauer

Home: (605) 739-5621

Cell: (605) 490-9528

P.O. Box 425 • Faith, SD 57626

Doug & Amie Schauer

(605) 967-2611



Catalog produced by:



RPI Promotions

Don Ravellette • (605) 685-5147

Beau Ravellette • (605) 685-8155

P.O. Box 788 • Philip, South Dakota 57567

www.rpipromotions.com

TEX Playbook 5437

Reg: +*18414912 • Birth Date: 08/03/2015

{BASIN PAYWEIGHT 006S
BASIN PAYWEIGHT 1682 **AAA #**17038724**
 Sire {21AR O LASS 7017
 {SUMMITCREST COMPLETE 1P55
RITA 1C43 of 9M26 COMPLETE **AAA +*17131969**
 Dam {RITA 9M26 of RITA 5F56 PRED

VERMILION PAYWEIGHT J847
 BASIN LUCY 3829
 HARB PENDLETON 765 J H
 21AR O LASS F24A
 C F RIGHT DESIGN 1802
 SUMMITCREST ELBA 1M17
 G A R PREDESTINED
 RITA 5F56 of 1198 FD



CED	BW	WW	YW	SC	Doc	Milk	CW	Marb	RE	\$W	\$F	\$G	\$B
+15	-.1	+59	+103	+1.03	+31	+35	+45	+51	+35	+79	+95	+41	+136

Playbook calves have risen to the top of calf crops across the country. They are quiet tempered, deep bodied, structurally correct with exceptional eye appeal and performance. A proven low birth weight, calving ease sire who does not sacrifice body dimension or growth. Very unique to see these kind of numbers and be a positive for energy.



SAV BRAND NAME 9115 – MATERNAL GRANDSIRE TO LOT 1



SCHAUER PLAYBOOK 938

Born: 3/25/19 • Reg: 19658609

SIRE: **TEX PLAYBOOK 5437**

{S A V BRAND NAME 9115
SCHAUER BRAND NAME 39728
 Dam

{SCHAUER DUKE 9728

S A V BISMARCK 5682
 S A V BLACKCAP MAY 5530
 SCHAUER DUKE 616
 SCHAUER 004 7238

BW: 81	WW: 772	205: 767	WW Ratio: 116	
CED	BW	WW	YW	MILK
+11	+0.2	+64	+106	+31

938 is a serious herd bull prospect. His dam has produced 4 calves with an average BW of 76# and a birth ratio of 96 while boasting a WW ratio of 107 on 4.



2 SCHAUER PLAYBOOK 955

Born: 3/29/19 • Reg: 19658610

SIRE: **TEX PLAYBOOK 5437**

{ V D A R REALLY WINDY 4097	A A R REALLY WINDY 1205
SCHAUER REALLY WINDY 39755	VDAR BLACKBIRD 2031
Dam	LEACHMAN NEW DESIGN 878-4570
{ SCHAUER NEW DESIGN 9755	SCHAUER DATELINE 7565

BW: 84	WW: 730	205: 736	WW Ratio: 112
CED	BW	WW	YW
+13	-0.2	+61	+101
			MILK
			+27

A calving ease specialist that does not sacrifice performance and has cow maker written all over him. Dam posts 5 calves with an average BW of 75# with a WW ratio of 101.

3 SCHAUER PLAYBOOK 968

Born: 3/28/19 • Reg: 19658612

SIRE: **TEX PLAYBOOK 5437**

{ V D A R REALLY WINDY 4097	A A R REALLY WINDY 1205
SCHAUER REALLY WINDY 34168	VDAR BLACKBIRD 2031
Dam	H A R B CINCHA 829
{ SCHAUER CINCHA 4168	SCHAUER CLASS ACT 1685

BW: 76	WW: 695	205: 698	WW Ratio: 106
CED	BW	WW	YW
+15	-1.3	+59	+98
			MILK
			+26

Another calving ease son of Playbook from a great cow family. Dam has 5 calves with a WW ratio of 101. Five daughters of 4168 are currently working in our herd.



MATERNAL BROTHER TO LOT 5

4 SCHAUER PLAYBOOK 951

Born: 3/31/19 • Reg: 19658593

SIRE: **TEX PLAYBOOK 5437**

{ V D A R REALLY WINDY 4097	A A R REALLY WINDY 1205
SCHAUER REALLY WINDY 521	VDAR BLACKBIRD 2031
Dam	CONNELLY CONSENSUS 7229
{ SCHAUER CONSENSUS 317521	SCHAUER FINAL ANSWER 17521

BW: 83	WW: 674	205: 699	WW Ratio: 106
CED	BW	WW	YW
+14	-0.5	+61	+101
			MILK
			+25

Yet another calving ease prospect from a very maternal bred cow family. Dam has produced 3 calves with an average BW of 76#.



5 SCHAUER PLAYBOOK 994

Born: 3/28/19 • Reg: 19658619

SIRE: **TEX PLAYBOOK 5437**

{ LEACHMAN NEW DESIGN 878-4570	BON VIEW NEW DESIGN 878
SCHAUER NEW DESIGN 9304	LEACHMAN BLACKCAP 0017
Dam	SITZ ALLIANCE 6595
{ SCHAUER ALLIANCE 304	SCHAUER FOCUS 034

BW: 87	WW: 688	205: 713	WW Ratio: 108
CED	BW	WW	YW
+9	+1.4	+56	+96
			MILK
			+35

A moderate framed, big hipped son of Playbook from one of our top cows. Anyone who appreciates deep-bodied, broody cows would love her. She has produced 8 calves with an average WW of 106.



MOGCK SURE SHOT - MATERNAL GRANDSIRE TO LOT 7

6

SCHAUER PLAYBOOK 987

Born: 3/27/19 • Reg: 19658986

SIRE: **TEX PLAYBOOK 5437**

{ BUSHES BIG TIME 452
SCHAUER BIG TIME 8327
 Dam
 { SCHAUER KENNEL 327

VERMILION DATELINE 7078
 BUSHES DIVIDEND BELLE 878
 ALC KENNEL 1K
 N R MISS HUSKER 327

BW: 81	WW: 687	205: 710	WW Ratio: 108	
CED	BW	WW	YW	MILK
+12	+0.3	+51	+90	+32

987 is a great calving ease prospect from one of our herd matrons. She has produced 10 calves with an average BW of 80# and a WW ratio of 101 on 10.

7

SCHAUER PLAYBOOK 978

Born: 4/3/19 • Reg: 19658599

SIRE: **TEX PLAYBOOK 5437**

{ MOGCK SURE SHOT
SCHAUER SURE SHOT 458
 Dam
 { BT QUEEN MOTHER 955R

MYTTY IN FOCUS
 MOGCK BLACK LASS 2065
 DALEBANKS CENTENNIAL 2526
 BT QUEEN MOTHER 178J

BW: 96	WW: 704	205: 722	WW Ratio: 109	
CED	BW	WW	YW	MILK
+5	+2.9	+62	+107	+33

High performing son of Playbook backed by a past donor from Beartooth Ranch; BT Queen Mother 178J. Dam has produced 4 calves with a WW ratio of 101.



8

SCHAUER PLAYBOOK 945

Born: 3/25/19 • Reg: 19658602

SIRE: **TEX PLAYBOOK 5437**

{ MOGCK SURE SHOT
SCHAUER SURE SHOT 455
 Dam
 { SCHAUER GAME DAY 076

MYTTY IN FOCUS
 MOGCK BLACK LASS 2065
 GDAR GAME DAY 449
 SCHAUER BEAUTY MX 7555

BW: 72	WW: 706	205: 702	WW Ratio: 106	
CED	BW	WW	YW	MILK
+14	-1.3	+60	+101	+32

A sure shot heifer bull with good performance. Dam has produced 4 calves with an average BW of 72# and a WW ratio of 101.



9

SCHAUER PLAYBOOK 930

Born: 3/30/19 • Reg: 19658613

SIRE: **TEX PLAYBOOK 5437**

{ CONNEALY CONSENSUS 7229
SCHAUER CONSENSUS 30850
 Dam
 { SCHAUER FINAL ANSWER 080

CONNEALY CONSENSUS
 BLUE LILLY OF CONANGA 16
 S A V FINAL ANSWER 0035
 SCHAUER RIGHT TIME 8550-7553

BW: 94	WW: 720	205: 728	WW Ratio: 110	
CED	BW	WW	YW	MILK
+9	+2.0	+64	+110	+33

A moderate framed, long bodied, high performing son of Playbook. Check out the bottom side of the pedigree. Odds are the daughters will be good. Dam has produced 4 calves with a WW ratio of 110.



MATERNAL BROTHER TO LOT 9

Barstow Bankroll B73

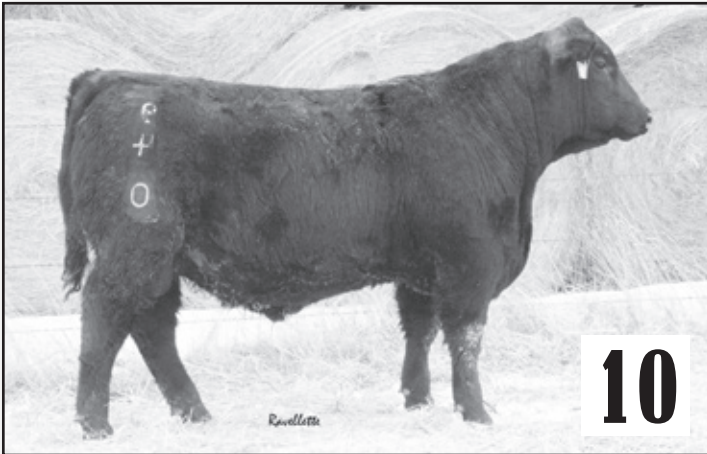
Reg: *18036327 • Birth Date: 02/14/2014

BARSTOW CASH Sire {SITZ DASH 10277 AAA #*17145326
 {BARSTOW QUEEN W16
 {CAR EFFICIENT 534
BARSTOW MISS DIANNA Z25 Dam AAA 17479418
 {BARSTOW MISS DIANNA X128
 SITZ UPWARD 307R
 SITZ EVERELDA ENTENSE 2665
 S A V FINAL ANSWER 0035
 RCA QUEEN R42
 K C F BENNETT EFFICIENT
 CAR MISS SUSIE 308
 SYDGEN C C & 7
 BARSTOW MISS DIANNA BA T134



Calving ease heifer bull that doesn't sacrifice performance. Look for moderate, functional daughters that are sure to please. Use Bankroll to build replacement heifers and eye stopping bull progeny.

CED	BW	WW	YW	SC	Doc	Milk	CW	Marb	RE	\$W	\$F	\$G	\$B
+14	-2.5	+56	+116	+1.06	+27	+18	+49	+39	+57	+48	+107	+40	+147



10

SCHAUER BANKROLL 940

Born: 3/21/19 • Reg: 19658514

SIRE: **BARSTOW BANKROLL B73**

{S A V RESOURCE 1441 RITO 707 OF IDEAL 3407 7075
SCHAUER RESOURCE 460 S A V BLACKCAP MAY 4136
 Dam MCATL REACHOUT 836
 {SCHAUER REACHOUT 060 SCHAUER TRADITION 6750

BW: 98	WW: 788	205: 773	WW Ratio: 117	
CED	BW	WW	YW	MILK
+2	+3.3	+70	+131	+24

940 is a powerful son of Bankroll with a little added frame. Dam has produced 4 calves with a WW ratio of 101. His G. Dam has produced 8 calves with a WW ratio of 107 on 8.

11

SCHAUER BANKROLL 969

Born: 3/25/19 • Reg: 19658509

SIRE: **BARSTOW BANKROLL B73**

{S A V RESOURCE 1441 RITO 707 OF IDEAL 3407 7075
SCHAUER RESOURCE 659 S A V BLACKCAP MAY 4136
 Dam L T 598 BANDO 9074
 {SCHAUER BANDO 519 SCHAUER CINCHA 3119

BW: 83	WW: 654	205: 687	WW Ratio: 104	
CED	BW	WW	YW	MILK
+11	-0.6	+56	+108	+23

Great phenotype from a dam that has 2 calves with an average BW of 74# and a WW ratio of 106. Some of you may recognize the bottom side of this pedigree as they have produced many top bulls for us. G. Dam produced 12 calves with a WW ratio of 98 and a G. Dam had 8 at 103.



12

SCHAUER BANKROLL 943

Born: 3/27/19 • Reg: 19658511

SIRE: **BARSTOW BANKROLL B73**

{SCHAUER LONG DISTANCE 202 MOHNEN LONG DISTANCE 1639
SCHAUER LONG DISTANCE 463 SCHAUER CINCHA 029
 Dam WHITESTONE CISCO KID Z120
 {SCHAUER CISCO 256 SCHAUER FRANKLIN 8563

BW: 84	WW: 676	205: 677	WW Ratio: 103	
CED	BW	WW	YW	MILK
+11	-0.9	+58	+108	+21

Another nice calf by Bankroll from a long line of solid producers. Dam records a WW ratio of 105 on 3. She posted an individual record of 108. Great grandam produced 8 calves with a WW ratio of 104.

13

SCHAUER BANKROLL 928

Born: 3/22/19 • Reg: 19658517

SIRE: **BARSTOW BANKROLL B73**

{MOHNEN LONG DISTANCE 1639 MOHNEN BRUSHPOPPER 295
SCHAUER LONG DISTANCE 287 BALDRIDGE BLACKBIRD M565
 Dam LEACHMAN RIGHT TIME
 {SCHAUER QUEEN MOTHER RT 801 BT QUEEN MOTHER 178J

BW: 77	WW: 695	205: 684	WW Ratio: 104	
CED	BW	WW	YW	MILK
+14	-2.1	+50	+95	+24

A moderate framed calving ease bull from a proven low birth cow. She has 6 calves with an average BW of 77# and an average WW ratio of 102 on 6.

14

SCHAUER BANKROLL 902

Born: 3/18/19 • Reg: 19658519

SIRE: **BARSTOW BANKROLL B73**

{VERMILION X FACTOR	NICHOLS EXTRA K205
SCHAUER X FACTOR 052	VERMILION LADY 2888
Dam	ALC JAWBREAKER I15J
{SCHAUER JAWBREAKER 1862	SCHAUER TRAVELER 8652

BW: 68	WW: 748	205: 726	WW Ratio: 110	
CED	BW	WW	YW	MILK
+13	-1.8	+56	+105	+22

This guy literally covers all the bases and could be used in just about any scenario. He is low birth, high performance with awesome natural thickness. His dam has produced 7 calves with an average BW of 79# and a WW ratio of 103.



14



16

15

SCHAUER BANKROLL 990

Born: 3/18/19 • Reg: 19658520

SIRE: **BARSTOW BANKROLL B73**

{SCHAUER DUKE 616	CAR DUKE 104
SCHAUER DUKE 9710	SCHAUER 616-1860
Dam	G A R US PREMIUM BEEF
{SCHAUER PREMIUM BEEF 7619	SCHAUERS TREND 619

BW: 76	WW: 694	205: 696	WW Ratio: 105	
CED	BW	WW	YW	MILK
+11	-1.9	+51	+96	+24

Another calving ease son of Bankroll backed by a proven producer. His dam has produced 9 calves with an average WW ratio of 108.

16

SCHAUER BANKROLL 932

Born: 3/24/19 • Reg: 625693399

SIRE: **BARSTOW BANKROLL B73**

{WHITSTONE CISCO KID Z120	S A V PIONEER 7301
Dam	BOYD ALTUNE 7304
{	SCHAUER IN FOCUS759

BW: 79	WW: 688	205: 682	WW Ratio: 103	
CED	BW	WW	YW	MILK
-	-	-	-	-

This guy is super long bodied in a moderate frame. Dam posts an average BW of 75# and a WW ratio of 104 on 4.

S Foundation 514

Reg: +*18200213 • Birth Date: 02/19/2015

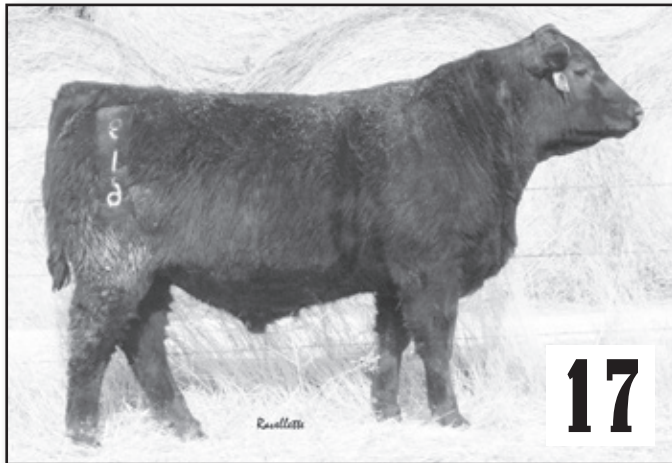
{VISIONTOPLINE ROYAL STOCKMAN
VISION UNANIMOUS 1418 **AAA #*16992096**
 Sire {VISION EDELLA 665
 {S CHISUM 6175
S LADY ANN 8384 **AAA #16342665**
 Dam {S LADY ANN 6325

GAMBLES ROYAL FLUSH
 LA GRAND PRIDE 7140
 BOYD ON TARGET 1083
 VISION EDELLA 337
 S ALLIANCE 3313
 S GLORIA 464
 CONNEALY FREIGHTLINER
 S LADY ANN 4327



"A favorite to visitors at LT Ranch, having a quiet disposition and a powerful seedstock bull look." - Brent Thiel
 Foundation can be counted on to improve docility, structure and udder quality, while moderating mature size. Daughters are being described as excellent by many.

CED	BW	WW	YW	SC	Doc	Milk	CW	Marb	RE	\$W	\$F	\$G	\$B
+5	+8	+53	+92	+1.89	+32	+17	+36	+69	+20	+50	+67	+47	+114



17

SCHAUER FOUNDATION 916

Born: 2/25/19 • Reg: 19658554

SIRE: **S FOUNDATION 514**

{COLEMAN CHARLO 0256
SCHAUER CHARLO 606
 Dam {SCHAUER FOREVER LADY RT 1507
 O C C PAXTON 730P
 BOHI ABIGALE 6014
 LEACHMAN RIGHT TIME
 ALC FOREVER LADY E51P

BW: 88	WW: 695	205: 674	WW Ratio: 102	
CED	BW	WW	YW	MILK
+4	+1.9	+52	+93	+21

916 was one of my favorites through the summer. Coming from the Forever Lady cow family, his daughters are sure to be good. His Grandam posts a WW ratio of 102 on 6.

18

SCHAUER FOUNDATION 917

Born: 3/23/19 • Reg: 19658569

SIRE: **S FOUNDATION 514**

{KESSLERS FRONTMAN R001
SCHAUER FRONTMAN 1987
 Dam {SCHAUER ABERDEEN 96387
 CONNEALY FRONT PAGE 0228
 KESSLERS BELL 0024
 TC ABERDEEN 759
 SCHAUER GRID TOPPER 6387

BW: 91	WW: 764	205: 754	WW Ratio: 114	
CED	BW	WW	YW	MILK
+5	+1.4	+59	+100	+26

A high performing solid son of Foundation. Dam posts a WW ratio of 109 on 6.



MATERNAL BROTHER TO LOT 18

19

SCHAUER FOUNDATION 920

Born: 3/28/19 • Reg: 19658568

SIRE: **S FOUNDATION 514**

{KESSLERS FRONTMAN R001
SCHAUER FRONTMAN 290
 Dam {SCHAUER BANDWAGON 090
 CONNEALY FRONT PAGE 0228
 KESSLERS BELL 0024
 L T BANDWAGON 3105
 SCHAUER TopLine 6390

BW: 79	WW: 687	205: 690	WW Ratio: 105	
CED	BW	WW	YW	MILK
+7	+0.2	+52	+86	+24

A low birth, high performing calf whose dam posts a WW ratio of 104 on 6.

20

SCHAUER FOUNDATION 983

Born: 3/29/19 • Reg: 19658567

SIRE: **S FOUNDATION 514**

{KESSLERS FRONTMAN R001
SCHAUER FRONTMAN 268
 Dam {SCHAUER IN FOCUS 9683
 CONNEALY FRONT PAGE 0228
 KESSLERS BELL 0024
 MYTTY IN FOCUS
 SCHAUER BIG TIME 6873

BW: 93	WW: 748	205: 754	WW Ratio: 114	
CED	BW	WW	YW	MILK
+5	+1.6	+62	+104	+21

A performance bull with lots of depth and thickness. G dam posts a WW ratio of 104 on 7.

21

SCHAUER FOUNDATION 914

Born: 3/30/19 • Reg: 19658566

SIRE: **S FOUNDATION 514**

{KESSLERS FRONTMAN R001

SCHAUER FRONTMAN 293

Dam

{SCHAUER BALANCER 9783

CONNEALY FRONT PAGE 0228

KESSLERS BELL 0024

KOUPALS B&B BALANCER 4017

SCHAUER ALLIANCE 7893

BW: 83	WW: 670	205: 678	WW Ratio: 103
CED	BW	WW	YW
+8	-0.1	+51	+85
			MILK
			+24

A moderate framed son of Foundation with good performance. Dam has an individual WW ratio of 104. Grandam had 2 calves with a WW ratio of 116 on 2.



22

SCHAUER FOUNDATION 924

Born: 3/25/19 • Reg: 625693401

SIRE: **S FOUNDATION 514**

{KESSLERS FRONTMAN R001

Dam

{

CONNEALY FRONT PAGE 0228

KESSLERS BELL 0024

SITZ ALLIANCE 6595

BW: 96	WW: 763	205: 759	WW Ratio: 114
CED	BW	WW	YW
-	-	-	-
			MILK
			-

Phenotypically flawless and just flat good! Dam records a WW ratio of 105 on 4.



23

SCHAUER FOUNDATION 964

Born: 2/27/19 • Reg: 19658547

SIRE: **S FOUNDATION 514**

{CONNEALY COURAGE 25L

SCHAUER COURAGE 694

Dam

{SCHAUER GAME DAY 094

CONNEALY CONFIDENCE 0100

PEARL PAMMY OF CONANGA 194

GDAR GAME DAY 449

SCHAUER DENSITY 7294

BW: 73	WW: 665	205: 649	WW Ratio: 98
CED	BW	WW	YW
+10	+0.0	+50	+88
			MILK
			+22

A smooth made stylish calving ease son of Foundation. Dam had an individual WW ratio of 104. G dam posts a BW ratio of 97 and a WW ratio of 103 on 5.



24

SCHAUER FOUNDATION 971

Born: 2/21/19 • Reg: 19658546

SIRE: **S FOUNDATION 514**

{CONNEALY COURAGE 25L

SCHAUER COURAGE 671

Dam

{SCHAUER FOREVER LADY IF 011

CONNEALY CONFIDENCE 0100

PEARL PAMMY OF CONANGA 194

MYTTY IN FOCUS

CARLSON 0016 FOREVER LADY603

BW: 76	WW: 640	205: 618	WW Ratio: 94
CED	BW	WW	YW
+11	-0.1	+47	+83
			MILK
			+21

Another calving ease son of Foundation by the Forever Lady cow family. Dam has 2 calves with an average BW of 75#. G. dam has 6 calves with a WW ratio of 102.

25

SCHAUER FOUNDATION 965

Born: 2/22/19 • Reg: 19658552

SIRE: **S FOUNDATION 514**

{PA FULL POWER 1208

SCHAUER FULL POWER 655

Dam

{SCHAUER IN FOCUS 205

PA POWER TOOL 9108

PINE VIEW SQR RITA W091

SCHAUER IN FOCUS759

SCHAUER GAME DAY 076

BW: 77	WW: 634	205: 614	WW Ratio: 93
CED	BW	WW	YW
+8	-0.6	+51	+90
			MILK
			+19

Another low birth, eye appealing son of Foundation. Dam had an individual WW ratio of 108. She has 2 calves with an average BW of 76#. G. dam has a BW ratio of 93 and a WW ratio of 103 on 5.



26

SCHAUER FOUNDATION 918

Born: 3/18/19 • Reg: 19658560

SIRE: **S FOUNDATION 514**

{ CONNEALY THUNDER
SCHAUER THUNDER 568
 Dam
 { SCHAUER CISCO 208

BALDRIDGE KABOOM K243 KCF
 PARKA OF CONANGA 241
 WHITESTONE CISCO KID Z120
 SCHAUER EAGLE EYE 068

BW: 75	WW: 742	205: 736	WW Ratio: 112	
CED	BW	WW	YW	MILK
+8	-0.4	+61	+104	+23

Another son of Foundation that could be used in so many different ways. Dam has 3 calves with a BW ratio of 97 and a WW ratio of 108.

27

SCHAUER FOUNDATION 904

Born: 2/28/19 • Reg: 19658548

SIRE: **S FOUNDATION 514**

{ CONNEALY ARSENAL 2174
SCHAUER ARSENAL 663
 Dam
 { CARLSON 0016 FOREVER LADY603

CONNEALY PACKER 547
 BLACK RICE OF CONANGA 9529
 BON VIEW NEW DESIGN 878
 S A F FOREVER LADY 0016

BW: 95	WW: 704	205: 688	WW Ratio: 104	
CED	BW	WW	YW	MILK
+1	+3.6	+57	+102	+24

A long-bodied calf with good performance from the Forever Lady cow family. Dam has a WW ratio of 107 on 2.

Deer Valley Fox Trot 5327

Reg: +*18232839 • Birth Date: 03/06/2015

{S A V FINAL ANSWER 0035
SANDPOINT BUTKUS X797 AAA +*16829413
 Sire {G A R GRID MAKER 4603
 {CONNEALY ONWARD
SITZ HENRIETTA PRIDE 643T AAA +15836552
 Dam {SITZ HENRIETTA PRIDE 81M

SITZ TRAVELER 8180
 S A V EMULOUS 8145
 G A R GRID MAKER
 G A R NEW DESIGN 741
 CONNEALY LEAD ON
 ALTUNE OF CONANGA 6104
 SITZ VALUE 7097
 SITZ HENRIETTA PRIDE 1370



Extremely deep bodied, high capacity, easy fleshing individual. Huge topped, wide based tank of a bull. Use to improve fleshing ability, docility, and scrotal development.

CED	BW	WW	YW	SC	Doc	Milk	CW	Marb	RE	\$W	\$F	\$G	\$B
+8	+1.3	+70	+125	+1.68	+40	+16	+58	+52	+61	+64	+113	+49	+162

28

SCHAUER FOX TROT 957

Born: 2/22/19 • Reg: 19660775

SIRE: **DEER VALLEY FOX TROT 5327**

{WHITESTONE CISCO KID Z120
SCHAUER CISCO 597
 Dam {SCHAUER NEW DESIGN 94257

S A V PIONEER 7301
 BOYD ALTUNE 7304
 LEACHMAN NEW DESIGN 878-4570
 SCHAUER RIGHT TIME 1147-257

BW: 86	WW: 765	205: 710	WW Ratio: 108
CED	BW	WW	YV
+6	+2.0	+64	+112
			MILK
			+24

A wide topped high performing son of Fox Trot. Dam posts a BW ratio of 97 and a WW ratio of 106 on 2. G. dam had a WW ratio of 109 on 8.



29

SCHAUER FOX TROT 963

Born: 2/20/19 • Reg: 19660771

SIRE: **DEER VALLEY FOX TROT 5327**

{COLEMAN CHARLO 0256
SCHAUER CHARLO 653
 Dam {SCHAUER GRID TOPPER 96053

O C C PAXTON 730P
 BOHI ABIGALE 6014
 SCHAUER GRID TOPPER 742
 SCHAUER BIG TIME 6053

BW: 87	WW: 697	205: 669	WW Ratio: 101
CED	BW	WW	YV
+6	+2.1	+61	+109
			MILK
			+19

Just a touch more frame than most of the Fox Trots. Dam posts a WW ratio of 106 on 2.



COLEMAN CHARLO 0256 - MATERNAL GRANDSIRE TO LOT 29

30

SCHAUER FOX TROT 913

Born: 3/25/19 • Reg: 19660779

SIRE: **DEER VALLEY FOX TROT 5327**

{S A V BISMARCK 5682
SCHAUER BISMARCK 013
 Dam {SCHAUER TRAV 71 9753

G A R GRID MAKER
 S A V ABIGALE 0451
 STROHS TRAVELER 5611
 SCHAUER DATELINE 7553

BW: 92	WW: 700	205: 696	WW Ratio: 105
CED	BW	WW	YV
+4	+2.5	+59	+104
			MILK
			+19

A little more frame and good performance from a proven cow. She has had 8 calves with a WW ratio of 101.

31

SCHAUER FOX TROT 911

Born: 2/27/19 • Reg: 19660773

SIRE: **DEER VALLEY FOX TROT 5327**

{DUFF HOBART 8302
SCHAUER HOBART 668
 Dam {SCHAUER DUKE 088

DUFF NEW EDITION 6108
 DCC DIXIE ERICA 001
 SCHAUER DUKE 616
 SCHAUER POWER ONE 8648

BW: 95	WW: 734	205: 714	WW Ratio: 108
CED	BW	WW	YV
+2	+3.6	+69	+116
			MILK
			+18

Lots of growth in this high performing son of Fox Trot. His dam records 2 calves with a WW ratio of 107.

S A V President 6847

Reg: +*18578964 • Birth Date: 01/10/2016

{O C C PAXTON 730P
COLEMAN CHARLO 0256 **AAA #+*16879074**
 Sire {BOHI ABIGALE 6014
 {S A V 8180 TRAVELER 004
S A V BLACKCAP MAY 4136 **AAA *14739095**
 Dam {S A V MAY 2397

O C C FOCUS 813F
 O C C BLACKBIRD 736K
 SITZ TRAVELER 8180
 S A V ABIGALE 6062
 SITZ TRAVELER 8180
 BOYD FOREVER LADY 8003
 S A F 598 BANDO 5175
 S A V MAY 7238



CED	BW	WW	YW	SC	Doc	Milk	CW	Marb	RE	\$W	\$F	\$G	\$B
+4	+3.2	+75	+128	+62	+30	+28	+42	+09	+90	+77	+71	+33	+104

32 SCHAUER PRESIDENT 944

Born: 3/20/19 • Reg: 19663558

SIRE: **S A V PRESIDENT 6847**

{S A V PRIORITY 7283
SCHAUER PRIORITY 474
 Dam {SCHAUER FOUNDATION 574
 S A V FINAL ANSWER 0035
 S A V BLACKCAP MAY 5530
 WHITNEY CREEK FOUNDATION 112
 SCHAUER 8180 074

BW: 83	WW: 746	205: 729	WW Ratio: 110	
CED	BW	WW	YW	MILK
+8	+1.1	+65	+107	+26

A really long bodied son of President. Dam records 4 calves with a BW ratio of 96 and a WW ratio of 103.



33 SCHAUER PRESIDENT 948

Born: 3/24/19 • Reg: 19663559

SIRE: **S A V PRESIDENT 6847**

{S A V PRIORITY 7283
SCHAUER PRIORITY 468
 Dam {SCHAUER CINCHA 4168
 S A V FINAL ANSWER 0035
 S A V BLACKCAP MAY 5530
 H A R B CINCHA 829
 SCHAUER CLASS ACT 1685

BW: 73	WW: 678	205: 672	WW Ratio: 102	
CED	BW	WW	YW	MILK
+11	-0.4	+63	+105	+25

This guy has been one of my favorites all year. He's moderate framed and really deep from a very moderate Priority daughter. She posts a BW ratio of 95 and a WW ratio of 104 on 4.

34 SCHAUER PRESIDENT 958

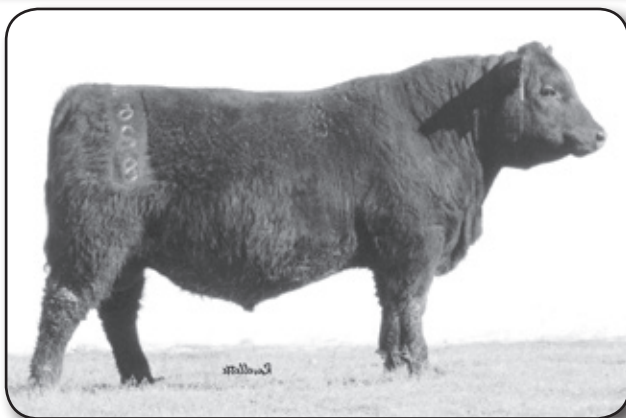
Born: 3/21/19 • Reg: 19663547

SIRE: **S A V PRESIDENT 6847**

{SCHAUER MOTIVE 210
SCHAUER MOTIVE 598
 Dam {SCHAUER RIGHT ANSWER 9688
 SOO LINE MOTIVE 9016
 SCHAUER NEW DESIGN 8765
 CONNEALY RIGHT ANSWER 746
 SCHAUER BIG TIME 6828

BW: 75	WW: 682	205: 684	WW Ratio: 104	
CED	BW	WW	YW	MILK
+9	+1.0	+61	+102	+27

Another moderate framed, wide-topped son of President. Dam posts a BW ratio of 94 and a WW ratio of 103 on 3.



MATERNAL BROTHER TO LOT 33



SAV AMERICA - ALL TIME TOP SELLING ANGUS BULL
 & SON OF SAV PRESIDENT

Musgrave Aviator

Reg: *17264774 • Birth Date: 01/30/2012

{SITZ UPWARD 307R
KOUPALS B&B IDENTITY AAA #*16710463
 Sire {B&B ERICA 605
 {S A V FINAL ANSWER 0035
MCATL FOREVER LADY 1429-138 AAA 16483505
 Dam {ALC FOREVER LADY R02S

CONNELLY ONWARD
 SITZ HENRIETTA PRIDE 81M
 G A R EXALTATION 3144
 B&B ERICA 4064
 SITZ TRAVELER 8180
 S A V EMULOUS 8145
 LEACHMAN RIGHT TIME
 ALC FOREVER LADY K14P



A phenotypic favorite of cowmen across the industry. Aviator is a medium framed, visually appealing with thickness and muscle down his top that carries down into his lower quarter. A proven calving ease sire that is full of meat.

CED	BW	WW	YW	SC	Doc	Milk	CW	Marb	RE	\$W	\$F	\$G	\$B
+8	-1.8	+50	+91	+1.05	+7	+25	+28	+5.4	+6.7	+62	+83	+49	+132

35

SCHAUER AVIATOR 980

Born: 4/5/19 • Reg: 19661651

SIRE: **MUSGRAVE AVIATOR**

{WHITSTONE CISCO KID Z120
SCHAUER CISCO 209
 Dam {SCHAUER ABERDEEN 95082
 S A V PIONEER 7301
 BOYD ALTUNE 7304
 TC ABERDEEN 759
 SCHAUER RIGHT TIME 1147-508

BW: 86	WW: 704	205: 728	WW Ratio: 110	
CED	BW	WW	YW	MILK
+6	+0.1	+60	+105	+26

High performing son of Aviator. Dam has 6 calves with a WW ratio of 102.

36

SCHAUER AVIATOR 956

Born: 3/25/19 • Reg: 19661647

SIRE: **MUSGRAVE AVIATOR**

{BASIN EXCITEMENT
SCHAUER EXCITEMENT 536
 Dam {SCHAUER MISSING LINK 37156
 BASIN EXPEDITION R156
 BASIN LADY S532 AK
 O C C MISSING LINK 830M
 SCHAUER ALLIANCE 7156

BW: 80	WW: 632	205: 643	WW Ratio: 97	
CED	BW	WW	YW	MILK
+8	-0.5	+52	+96	+28

A calving ease bull with a really nice maternal pedigree. His full brother was one of our top sellers in 2018. Dam posted an individual WW ratio of 112 and has 3 calves with a WW ratio of 105.

37

SCHAUER AVIATOR 907

Born: 3/26/19 • Reg: 19661653

SIRE: **MUSGRAVE AVIATOR**

{LEACHMAN RIGHT TIME
SCHAUER FOREVER LADY RT 1507
 Dam {ALC FOREVER LADY E51P
 N BAR EMULATION EXT
 LEACHMAN ERICA 0025
 CONNEALY FREIGHTLINER
 PONDEROSA FOREVER LADY 1036

BW: 89	WW: 687	205: 685	WW Ratio: 104	
CED	BW	WW	YW	MILK
+4	+0.8	+50	+91	+24

Check out the maternal pedigree here. Double bred Forever Lady and a shot of Right Time. Dam has 6 calves with a WW ratio of 102.



MATERNAL BROTHER TO LOT 38

38

SCHAUER AVIATOR 905

Born: 4/27/19 • Reg: 19655073

SIRE: **SCHAUER AVIATOR 782**

{GDAR GAME DAY 449
SCHAUER GAME DAY 076
 Dam {SCHAUER BEAUTY MX 7555
 BOYD NEW DAY 8005
 G D A R Miss Wix 474
 B C MATRIX 4132
 BT BEAUTY 186R

BW: 83	WW: 613	205: 696	WW Ratio: 105	
CED	BW	WW	YW	MILK
+5	+0.4	+59	+101	+25

More maternal power here coming from the Beauty cow family. Dam has 8 calves with a WW ratio of 105.

S A V Circuit Breaker 7136

Reg: *18911225 • Birth Date: 02/23/2017



Long bodied and extra deep. Gentle disposition and superior feet and legs. Performance and end product outlier. Dam is a herd favorite at SAV with perfect feet and udder. Dam records a WW ratio of 107 on 5.

{RITO 707 OF IDEAL 3407 7075
S A V RECHARGE 3436 **AAA +*17633838**
 Sire {S A V BLACKCAP MAY 4136
 {S A V PRIORITY 7283
S A V MADAME PRIDE 3145 **AAA +*17556251**
 Dam {S A V MADAME PRIDE 1171
 R R RITO 707
 IDEAL 3407 OF 1418 076
 S A V 8180 TRAVELER 004
 S A V MAY 2397
 S A V FINAL ANSWER 0035
 S A V BLACKCAP MAY 5530
 S A V 707 RITO 9969
 S A V MADAME PRIDE 4466

CED	BW	WW	YW	SC	Doc	Milk	CW	Marb	RE	\$W	\$F	\$G	\$B
-2	+4.3	+81	+139	+62	+25	+21	+64	+22	+1.11	+67	+109	+46	+155



39 SCHAUER CIRCUIT BREAKER 929

Born: 3/24/19 • Reg: 19659731

SIRE: **S A V CIRCUIT BREAKER 7136**

{SOO LINE MOTIVE 9016
SCHAUER MOTIVE 299
 Dam {SCHAUER ALL AROUND 9329
 HF KODIAK 5R
 TLA BEAUTY 5R
 CONNEALY ALL AROUND
 SCHAUER GLORY 329

BW: 82	WW: 708	205: 702	WW Ratio: 106	
CED	BW	WW	YW	MILK
+4	+2.1	+65	+111	+21

Added frame and power here. Dam had an individual WW ratio of 102. G. Dam produced 3 calves with a WW ratio of 101.



40 SCHAUER CIRCUIT BREAKER 903

Born: 3/25/19 • Reg: 19659729

SIRE: **S A V CIRCUIT BREAKER 7136**

{SOO LINE MOTIVE 9016
SCHAUER MOTIVE 38503
 Dam {SCHAUER FREIGHT TRAIN 8503
 HF KODIAK 5R
 TLA BEAUTY 5R
 CONNEALY FREIGHT TRAIN
 SCHAUER MISS WIX 503

BW: 102	WW: 732	205: 728	WW Ratio: 110	
CED	BW	WW	YW	MILK
+3	+4.2	+70	+123	+23

Powerful son of Circuit Breaker with good thickness. Dam records 5 calves with a WW ratio of 104.

41 SCHAUER CIRCUIT BREAKER 919

Born: 3/28/19 • Reg: 19659732

SIRE: **S A V CIRCUIT BREAKER 7136**

{S A V FINAL ANSWER 0035
SCHAUER FINAL ANSWER 19508
 Dam {SCHAUER ABERDEEN 95082
 SITZ TRAVELER 8180
 S A V EMULOUS 8145
 TC ABERDEEN 759
 SCHAUER RIGHT TIME 1147-508

BW: 96	WW: 704	205: 707	WW Ratio: 107	
CED	BW	WW	YW	MILK
+0	+3.7	+73	+125	+21

Added frame in this son of Circuit Breaker from a proven cow. She records 7 calves with a WW ratio of 100.



MATERNAL BROTHER TO LOT 40



42

SCHAUER COMPASS 933

Born: 2/13/19 • Reg: 19658571

43

SCHAUER CHARLO 976

Born: 2/20/19 • Reg: 625693322

{EF COMMANDO 1366
BALDRIDGE COMPASS C041
 Sire
 {BALDRIDGE ISABEL Y69
 {SCHAUER FINAL ANSWER 179
CEDARFLO 179 RUBY BELLE 443
 Dam
 {CEDARFLO RUBY BELLE 1171
 EF COMPLEMENT 8088
 RIVERBEND YOUNG LUCY W1470
 STYLES UPGRADE J59
 BALDRIDGE ISABEL T935
 S A V FINAL ANSWER 0035
 SCHAUER RITA RW 6279
 CEDARFLO STACKER 1106
 CEDARFLO RUBY BELLE 545

BW: 93	WW: 775	205: 691	WW Ratio: 105	
CED	BW	WW	YW	MILK
+4	+1.9	+61	+108	+32

We purchased this guys dam at the Cedarflo Angus dispersion last year. She is a daughter of our own Final Answer 179 and was said to be Dave's favorite cow. She has produced 5 calves with a WW ratio of 107.

{COLEMAN CHARLO 0256
COLEMAN CHARLO 3212
 Sire
 {COLEMAN DONNA 714
 {SCHAUER IMPRESSIVE 564
SCHAUER IMPRESSIVE 736
 Dam
 {SCHAUER IN FOCUS 338-6
 O C C PAXTON 730P
 BOHI ABIGALE 6014
 CONNEALY ONWARD
 COLEMAN DONNA 386
 MOHNEN IMPRESSIVE 1093
 SCHAUER TOP LINE 054
 SCHAUER IN FOCUS759
 SCHAUER DYNASTY 386

BW: 80	WW: 660	205: 666	WW Ratio: 100	
CED	BW	WW	YW	MILK
-	-	-	-	-

A smaller framed, very docile son of 3212. Dam had an individual WW weight ratio of 109.

44

SCHAUER COWBOY UP 942

Born: 4/20/19 • Reg: 19655070



{HA Cowboy Up 5405
CLASSIC COWBOY UP 726
 Sire
 {CARLSON HEATHER BLOOM 202
 {S A V 8180 TRAVELER 004
SCHAUER TRAVELER 004 - 42862
 Dam
 {SCHAUER CINCHA 262
 HA OUTSIDE 3008
 HA BLACKCAP LADY 1602
 CARLSON RIGHT TIME 915
 CARLSON DANNY BOY 626
 SITZ TRAVELER 8180
 BOYD FOREVER LADY 8003
 H A R B CINCHA 829
 SCHAUER TRAVELER 8652

BW: 86	WW: 645	205: 731	WW Ratio: 111	
CED	BW	WW	YW	MILK
+5	+2.6	+55	+97	+22

One of my favorites in the entire offering. He truly is one of the best bulls in the sale considering he is a late April calf. Be sure to find him sale day. His dam posted an individual WW ratio of 107.

45

SCHAUER Cowboy Up 923

Born: 4/16/19 • Reg: 19655071

{ HA Cowboy Up 5405
SCHAUER Cowboy Up 726
 Sire
 { CARLSON HEATHER BLOOM 202

{ WHITESTONE CISCO KID Z120
SCHAUER CISCO 203
 Dam
 { CARLSON 0016 FOREVER LADY603

HA OUTSIDE 3008
 HA BLACKCAP LADY 1602
 CARLSON RIGHT TIME 915
 CARLSON DANNY BOY 626
 S A V PIONEER 7301
 BOYD ALTUNE 7304
 BON VIEW NEW DESIGN 878
 S A F FOREVER LADY 0016

BW: 87	WW: 722	205: 781	WW Ratio: 118	
CED	BW	WW	YW	MILK
+6	+1.9	+64	+110	+26

Another powerful son of our Cowboy Up. Be sure to find these young calves, you will not be disappointed. His Forever Lady dam has produced 6 calves with an impressive average WW ratio of 110.

46

SCHAUER HOBART 931

Born: 4/9/19 • Reg: 19655058

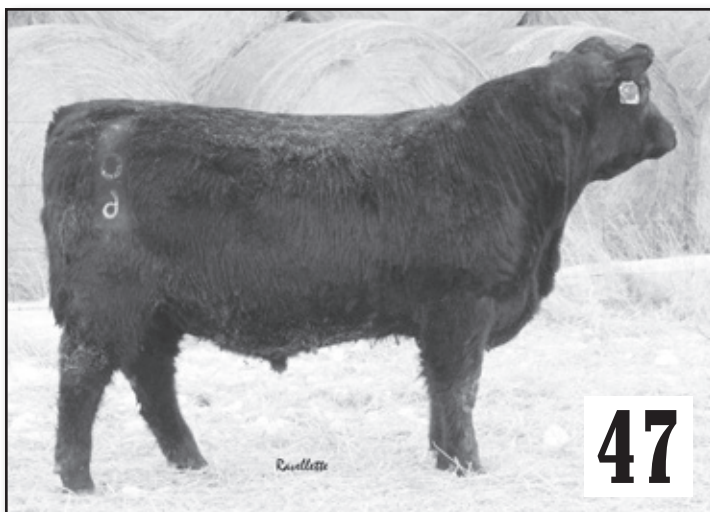
{ DUFF HOBART 8302
SCHAUER HOBART 675
 Sire
 { SCHAUER GREAT DIVIDE 295

{ MOHNEN IMPRESSIVE 1093
SCHAUER IMPRESSIVE 644
 Dam
 { SCHAUER RESOURCE 415

DUFF NEW EDITION 6108
 DCC DIXIE ERICA 001
 LIMESTONE GREAT DIVIDE U254
 SCHAUER BISMARCK 9375
 BASIN EXCITEMENT
 MOHNEN JILT 787
 S A V RESOURCE 1441
 SCHAUER LND 878-15074

BW: 85	WW: 630	205: 698	WW Ratio: 106	
CED	BW	WW	YW	MILK
+6	+1.3	+62	+100	+19

Good growth in this young son of Hobart. Dam records a WW ratio of 106 on 2. Grandam has 3 calves with a WW ratio of 103 and great grandam 7 calves with a WW ratio of 101.



47

SCHAUER HOBART 906

Born: 4/12/19 • Reg: 19655057

{ DUFF HOBART 8302
SCHAUER HOBART 675
 Sire
 { SCHAUER GREAT DIVIDE 295

{ SCHAUER LND 246
SCHAUER LND 528
 Dam
 { SCHAUER FINAL ANSWER 248

DUFF NEW EDITION 6108
 DCC DIXIE ERICA 001
 LIMESTONE GREAT DIVIDE U254
 SCHAUER BISMARCK 9375
 LEACHMAN NEW DESIGN 878-4570
 SCHAUER RIGHT TIME 1147-509
 S A V FINAL ANSWER 0035
 SCHAUER CINCHA 4168

BW: 80	WW: 636	205: 691	WW Ratio: 105	
CED	BW	WW	YW	MILK
+5	+2.0	+60	+96	+18

Super gentle and lots of power in this guy. Backed by 878, Right Time, Final Answer, and Cincha. Sounds like a recipe for a cow maker.

48

SCHAUER FULL POWER 950

Born: 4/16/19 • Reg: 19655060

{ PA FULL POWER 1208
SCHAUER FULL POWER 659
 Sire
 { SCHAUER REALLY WINDY 39755

{ SCHAUER GREAT DIVIDE 243
SCHAUER GREAT DIVIDE 530
 Dam
 { SCHAUER MOTIVE 39250

PA POWER TOOL 9108
 PINE VIEW SQR RITA W091
 V D A R REALLY WINDY 4097
 SCHAUER NEW DESIGN 9755
 LIMESTONE GREAT DIVIDE U254
 SCHAUER GRID TOPPER 7435
 SOO LINE MOTIVE 9016
 SCHAUER IN FOCUS 9250

BW: 75	WW: 632	205: 699	WW Ratio: 106	
CED	BW	WW	YW	MILK
+12	-1.5	+53	+92	+21

A smooth made, stylish, calving ease son of Full Power. His dam records 3 calves with a BW ratio of 91 and a WW ratio of 103.



MATERNAL BROTHER TO LOT 48

49

SCHAUER FULL POWER 901

Born: 3/17/19 • Reg: 19655062

{ PA FULL POWER 1208
SCHAUER FULL POWER 659
 Sire
 { SCHAUER REALLY WINDY 39755

{ COLEMAN CHARLO 0256
SCHAUER CHARLO 607
 Dam
 { SCHAUER PRIORITY 407

PA POWER TOOL 9108
 PINE VIEW SQR RITA W091
 V D A R REALLY WINDY 4097
 SCHAUER NEW DESIGN 9755
 O C C PAXTON 730P
 BOHI ABIGALE 6014
 S A V PRIORITY 7283
 SCHAUER QUEEN MOTHER RT 801



BW: 89	WW: 675	205: 691	WW Ratio: 105	
CED	BW	WW	YW	MILK
+6	+1.3	+55	+96	+25

Moderate framed and very deep from the Queen Mother cow family. Dam has 2 calves with a WW ratio of 107.

50

SCHAUER FULL POWER 967

Born: 4/17/19 • Reg: 19655061

{ PA FULL POWER 1208
SCHAUER FULL POWER 659
 Sire
 { SCHAUER REALLY WINDY 39755

{ WHITESTONE CISCO KID Z120
SCHAUER CISCO 687
 Dam
 { SCHAUER EAGLE EYE 087

PA POWER TOOL 9108
 PINE VIEW SQR RITA W091
 V D A R REALLY WINDY 4097
 SCHAUER NEW DESIGN 9755
 S A V PIONEER 7301
 BOYD ALTUNE 7304
 BC EAGLE EYE 110-7
 SCHAUER KENNEL 587

BW: 74	WW: 602	205: 691	WW Ratio: 105	
CED	BW	WW	YW	MILK
+9	-0.3	+58	+99	+23

Another moderate framed, easy fleshing Full Power: His dam recorded an individual WW ratio of 103.

51

SCHAUER ACTIVE DUTY 979

Born: 3/10/19 • Reg: 19655075

{ SCHAUER ACTIVE DUTY 596
SCHAUER ACTIVE DUTY 707
 Sire
 { SCHAUER IMPRESSIVE 527

{ S A V INSTINCT 4258
SCHAUER INSTINCT 722
 Dam
 { SCHAUER MOTIVE 299

R B ACTIVE DUTY 010
 SCHAUER FRONTMAN 268
 MOHNEN IMPRESSIVE 1093
 SCHAUER LONG DISTANCE 287
 S A V INTERNATIONAL 2020
 S A V EMBLYNETTE 1409
 SOO LINE MOTIVE 9016
 SCHAUER ALL AROUND 9329

BW: 82	WW: 684	205: 717	WW Ratio: 109	
CED	BW	WW	YW	MILK
+7	+1.3	+55	+93	+23

Great phenotype and eye appealing son of Active Duty. Motive 299 is one of the widest hipped, attractive cows in our herd.

2-YEAR OLD BULLS



52

SCHAUER CHARLO 844

Born: 3/23/18 • Reg: 19335015

{COLEMAN CHARLO 0256

SCHAUER CHARLO 3212

Sire

{COLEMAN DONNA 714

{S A V PRIORITY 7283

SCHAUER PRIORITY 468

Dam

{SCHAUER CINCHA 4168

O C C PAXTON 730P

BOHI ABIGALE 6014

CONNEALY ONWARD

COLEMAN DONNA 386

S A V FINAL ANSWER 0035

S A V BLACKCAP MAY 5530

H A R B CINCHA 829

SCHAUER CLASS ACT 1685

BW: 76	WW: 814	205: 771	WW Ratio: 108	
CED	BW	WW	YW	MILK
+9	-0.8	+63	+107	+26

Moderate framed, thick, easy fleshing son of Charlo. His super easy fleshing dam records 4 calves with an average BW of 78# and a WW ratio of 104. His maternal brother sells as lot 34.



53

SCHAUER CHARLO 833

Born: 4/20/18 • Reg: 19334985

{COLEMAN CHARLO 0256

SCHAUER CHARLO 643

Sire

{SCHAUER FRANKLIN 8563

{RHR HOOVER DAM X741

SCHAUER HOOVER DAM 3327

Dam

{SCHAUER KENNEL 327

O C C PAXTON 730P

BOHI ABIGALE 6014

TC FRANKLIN 619

SCHAUER RAINMAKER 563

HOOVER DAM

RIVER HILLS 7R8 S808

ALC KENNEL 1K

N R MISS HUSKER 327

BW: 92	WW: 714	205: 725	WW Ratio: 101	
CED	BW	WW	YW	MILK
+5	+1.4	+43	+76	+28

Powerful wide topped son of Charlo. His dam records 5 calves with a WW ratio of 105 grandam records 9 calves with a WW ratio of 103.

54

SCHAUER CHARLO 841

Born: 4/15/18 • Reg: 19334987

{COLEMAN CHARLO 0256

SCHAUER CHARLO 643

Sire

{SCHAUER FRANKLIN 8563

{CONNEALY CONSENSUS 7229

SCHAUER CONSENSUS 39241

Dam

{RIVER HILLS RUBY W241

O C C PAXTON 730P

BOHI ABIGALE 6014

TC FRANKLIN 619

SCHAUER RAINMAKER 563

CONNEALY CONSENSUS

BLUE LILLY OF CONANGA 16

RITO 112 OF 2536 RITO 616

RIVER HILLS RUBY T228

BW: 79	WW: 782	205: 780	WW Ratio: 109	
CED	BW	WW	YW	MILK
+8	+0.4	+54	+93	+27

Another powerful son of Charlo. His dam has produced 3 calves with a WW ratio of 108.



MATERNAL BROTHER TO LOT 53

55**SCHAUER CHISUM 869**

Born: 3/25/18 • Reg: 19335021

{S CHISUM 6175

S CHISUM 255

Sire

{S BLOSSOM 0278

{KESSLERS FRONTMAN R001

SCHAUER FRONTMAN 269

Dam

{SCHAUER NEW DESIGN 069

S ALLIANCE 3313

S GLORIA 464

SHIPWHEEL CHINOOK

S BLOSSOM 8378

CONNEALY FRONT PAGE 0228

KESSLERS BELL 0024

LEACHMAN NEW DESIGN 878-4570

SCHAUER CINCHA 4169

BW: 66	WW: 820	205: 765	WW Ratio: 107	
CED	BW	WW	YW	MILK
+17	-3.5	+51	+79	+26

A little added frame from this calving ease son of Chisum. Very rare to see this much power with this type of BW. Dam records 5 calves with an average BW of 66# and a WW ratio of 102.

57**SCHAUER GREAT DIVIDE 897**

Born: 5/1/18 • Reg: 19334984

{LIMESTONE GREAT DIVIDE U254

SCHAUER GREAT DIVIDE 243

Sire

{SCHAUER GRID TOPPER 7435

{LEACHMAN NEW DESIGN 878-4570

SCHAUER NEW DESIGN 94257

Dam

{SCHAUER RIGHT TIME 1147-257

B C MARATHON 7022

STEVENSON WATERBACK 462J

TC GRID TOPPER 355

SCHAUER FREIGHTLINER 4835

BON VIEW NEW DESIGN 878

LEACHMAN BLACKCAP 0017

PINE CREEK RIGHT TIME 1147

MISS WIX 257 OF MC CUMBER

BW: 86	WW: 730	205: 773	WW Ratio: 108	
CED	BW	WW	YW	MILK
+7	+0.3	+52	+87	+26

A little extra frame from one of our most proven powerful cows. She records 8 calves with a WW ratio of 109. Be sure to study his awesome pedigree.

59**SCHAUER HOBART 816**

Born: 4/26/18 • Reg: 19334995

{DUFF HOBART 8302

SCHAUER HOBART 675

Sire

{SCHAUER GREAT DIVIDE 295

{MOHNEN LONG DISTANCE 1639

SCHAUER LONG DISTANCE 250

Dam

{SCHAUER FINAL ANSWER 080

DUFF NEW EDITION 6108

DCC DIXIE ERICA 001

LIMESTONE GREAT DIVIDE U254

SCHAUER BISMARCK 9375

MOHNEN BRUSHPOPPER 295

BALDRIDGE BLACKBIRD M565

S A V FINAL ANSWER 0035

SCHAUER RIGHT TIME 8550-7553

BW: 102	WW: 774	205: 803	WW Ratio: 112	
CED	BW	WW	YW	MILK
+1	+3.6	+67	+109	+21

Possibly the most powerful two-year-old in the sale. His dam records a WW ratio of 104 on 6.

56**SCHAUER CAPITALIST 895**

Born: 2/24/18 • Reg: 19353383

{CONNEALY CAPITALIST 028

LD CAPITALIST 316

Sire

{LD DIXIE ERICA 2053

{V D A R WIND BREAK 7062

SCHAUER WIND BREAK 697

Dam

{SCHAUER NEW DESIGN 9755

S A V FINAL ANSWER 0035

PRIDES PITA OF CONANGA 8821

C A FUTURE DIRECTION 5321

LD DIXIE ERICA OAR 0853

V D A R REALLY WINDY 4097

V D A R LASS 0307

LEACHMAN NEW DESIGN 878-4570

SCHAUER DATELINE 7565

BW: 74	WW: 760	205: 731	WW Ratio: 102	
CED	BW	WW	YW	MILK
+8	-0.2	+59	+98	+28

A really good calving ease son of Capitalist with an awesome maternal pedigree. Dam records 2 calves with a WW ratio of 102.

58**SCHAUER RIGHT ON 829**

Born: 3/28/18 • Reg: 19335031

{CARLSON RIGHT EFFECT 203

CARLSON RIGHT ON 5001

Sire

{CARLSON ABIGALE 304

{R B ACTIVE DUTY 010

SCHAUER ACTIVE DUTY 499

Dam

{SCHAUER ALL AROUND 9329

CONNEALY RIGHT ANSWER 746

COLEMAN LADY 003

S A V PRIORITY 7283

S A V ABIGALE 1821

LCC NEW STANDARD

B A LADY 6807 305

CONNEALY ALL AROUND

SCHAUER GLORY 329

BW: 88	WW: 718	205: 692	WW Ratio: 97	
CED	BW	WW	YW	MILK
+7	+2.1	+68	+116	+19

Very broody, easy flushing cow family. Grandam records 3 calves with a WW ratio of 101.

60**SCHAUER HOBART 814**

Born: 4/14/18 • Reg: 19334996

{DUFF HOBART 8302

SCHAUER HOBART 675

Sire

{SCHAUER GREAT DIVIDE 295

{GARRET'S NATIONWIDE 800I

SCHAUER NATIONWIDE 17834

Dam

{SCHAUER TOP LINE 7834

DUFF NEW EDITION 6108

DCC DIXIE ERICA 001

LIMESTONE GREAT DIVIDE U254

SCHAUER BISMARCK 9375

O C C EMBLAZON 854E

BOYD FOREVER LADY 8003

CARLSON TOP LINE 5B2

SCHAUER RANCHER 8304

BW: 91	WW: 690	205: 686	WW Ratio: 96	
CED	BW	WW	YW	MILK
+1	+3.8	+50	+80	+15

Another powerful son of Hobart. His dam records 6 calves with a WW ratio of 100.



SCHAUER ANGUS
FAITH, SOUTH DAKOTA

**PO Box 425
Faith, SD 57626**

